



Upgrades

iMac (Early 2001)

Marketing Reference: Winter 2000-2001

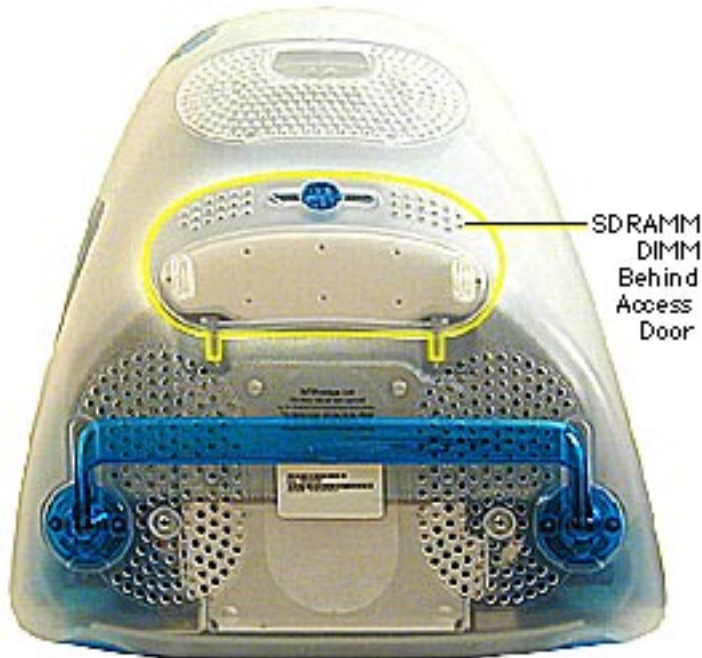


Memory

The iMac (Early 2001) computer comes with a minimum of 64 MB or 128 MB of SDRAM and can be expanded to a maximum of 1 GB.

Install a memory module that meets the following specifications:

- JEDEC PC-100 DIMM
- 64, 128, 256, or 512 MB
- 168-pin
- 125 MHz (8 ns) or faster



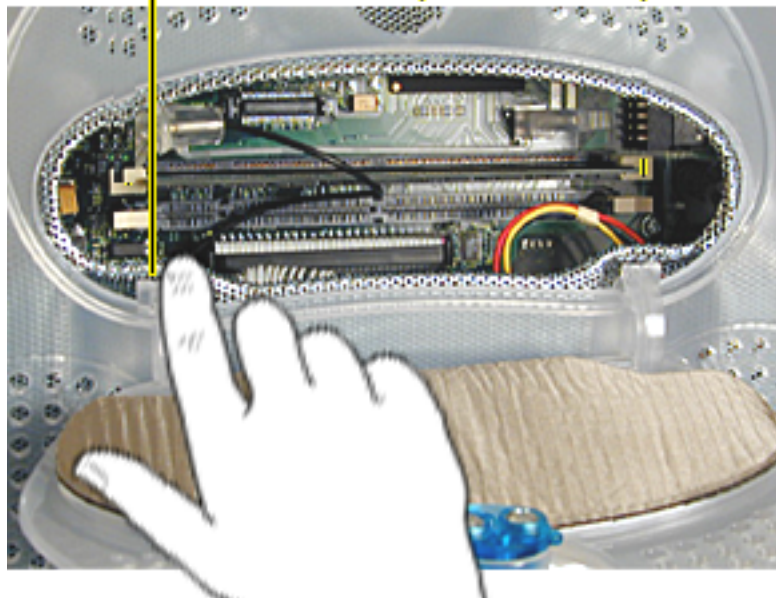


Note: Place a soft towel or cloth on the desk or surface. Position the screen face down on the cloth.

1. Using a flatblade screwdriver or a coin, turn the latch counterclockwise to open the rear access door.
2. Lower the access door.

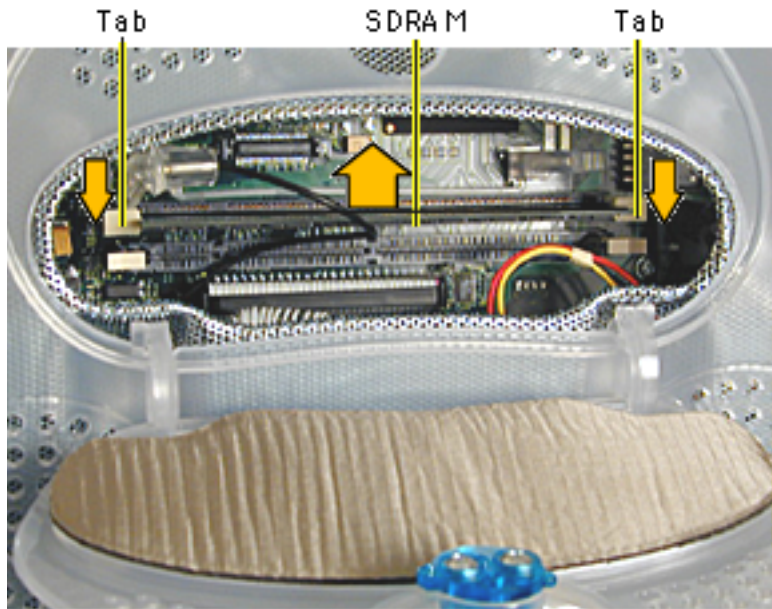


EMI Cover (Metal)

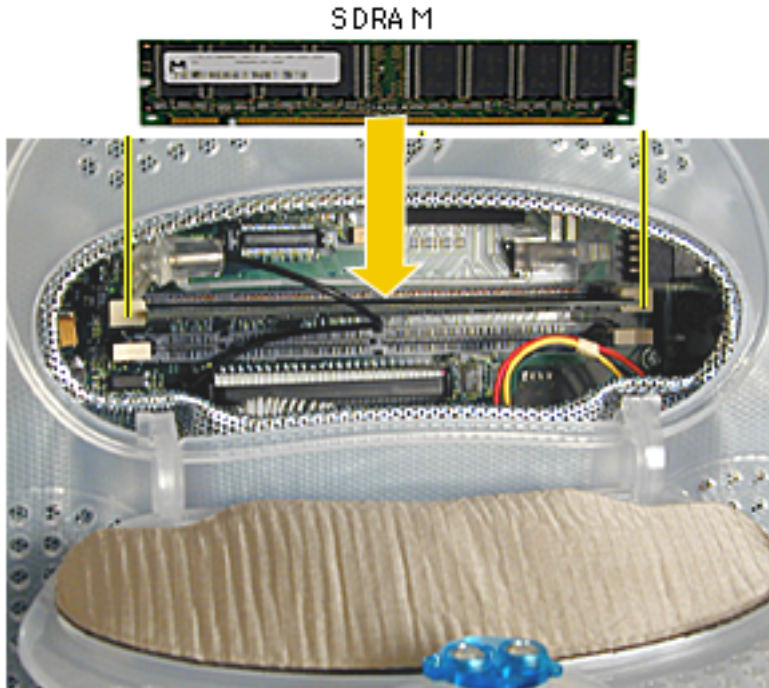


3. Touch the EMI cover that is visible inside the recessed latch area before touching any components on the main logic board. This protects the computer from damage caused by electrostatic discharge

.Important: If necessary, remove any existing memory module.



4. Push the ejector tabs on the slots outward and down so they are in the open position.



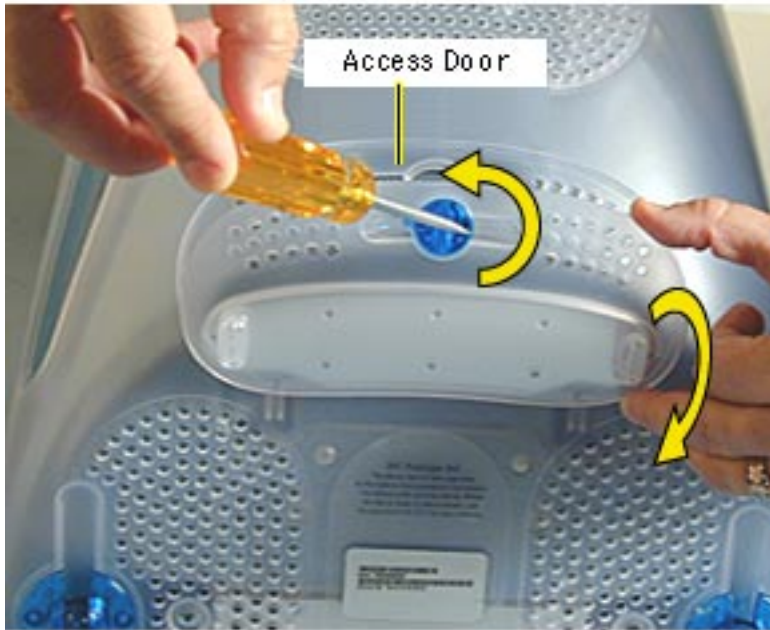
5. Align the notches on the memory module with the small notches inside the slot.
6. Push down on the DIMM until it snaps into place. The ejectors will automatically close.
7. Close the rear access door and test the computer before returning it to the customer.



AirPort Card

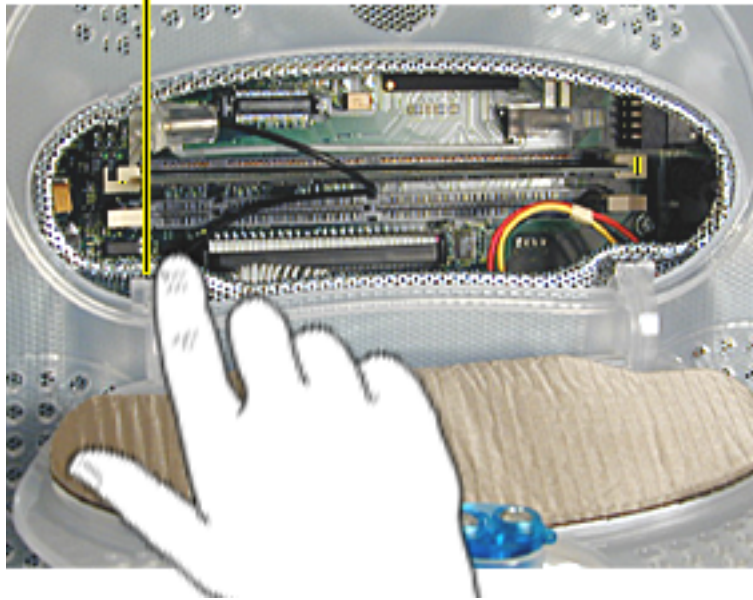
Place a soft towel or cloth on the desk or surface.

1. Position the screen face down on the cloth. Use a coin or flatblade screwdriver to turn the latch counterclockwise on the access door.
2. Lower the access door to open.

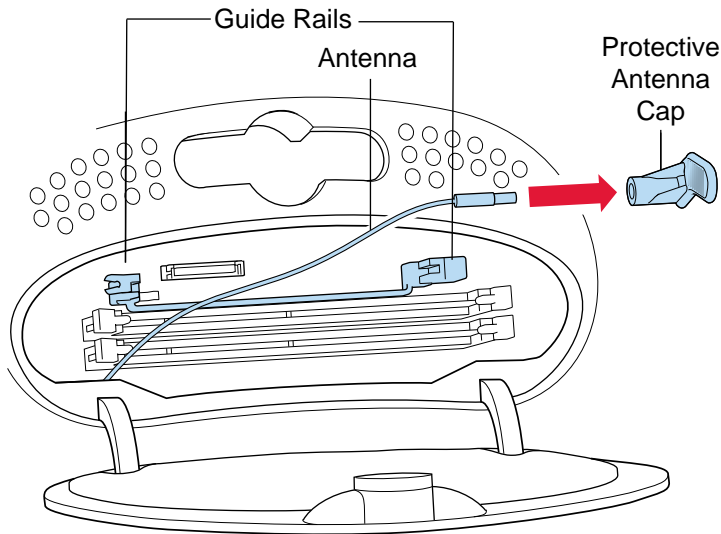




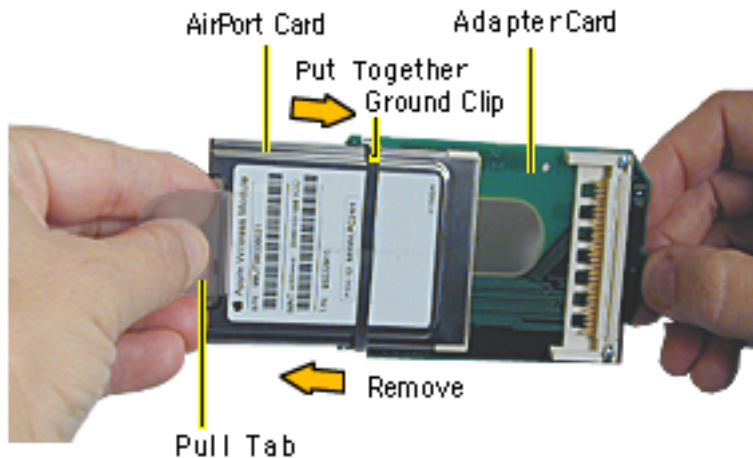
EMI Cover (Metal)



3. Touch the metal EMI shield inside the recessed latch area before touching any components on the main logic board.



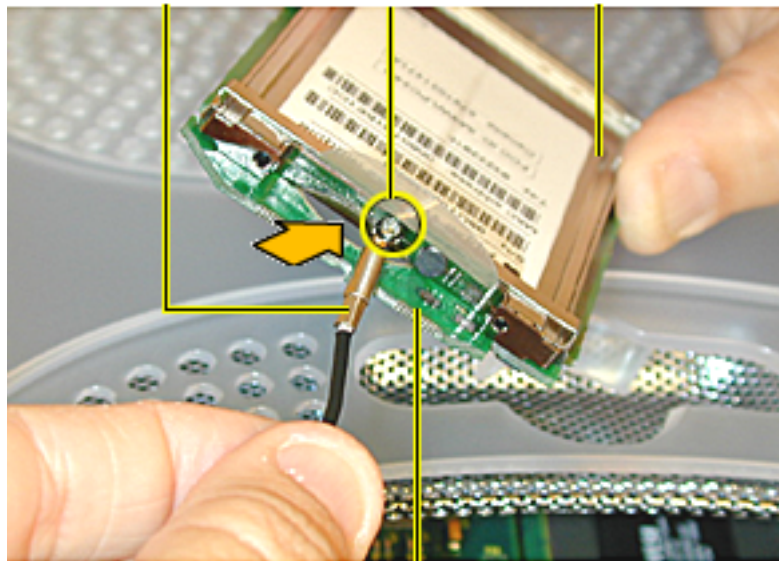
4. Detach the antenna from the left guide rail.
5. Remove the protective antenna cap from the end of the antenna and store the cap in a safe place.



- Slide the AirPort Card into the adapter card.
Note: It is probably easiest to attach the metal ground clip over the AirPort Card once the card is installed into the Adapter Card. This photo shows the ground clip already in place.

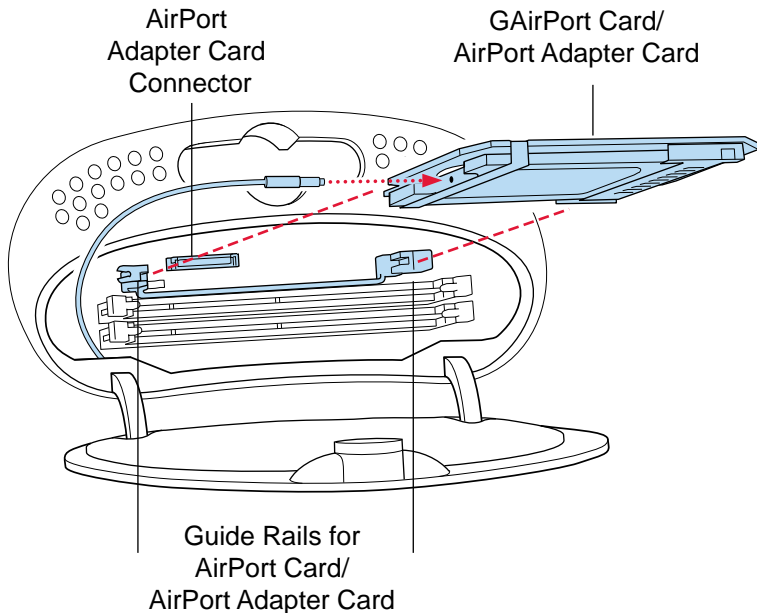


Antenna AirPort Connector AirPort Card



AirPort AdapterCard

7. Connect the antenna by plugging the antenna wire into the small hole in the end of the AirPort Card.



8. Align the edges of the AirPort Card with the guides on the AirPort Card slot. Insert the AirPort Card into the adapter Card connector.
9. Close the access door, test the computer before returning it to the customer.

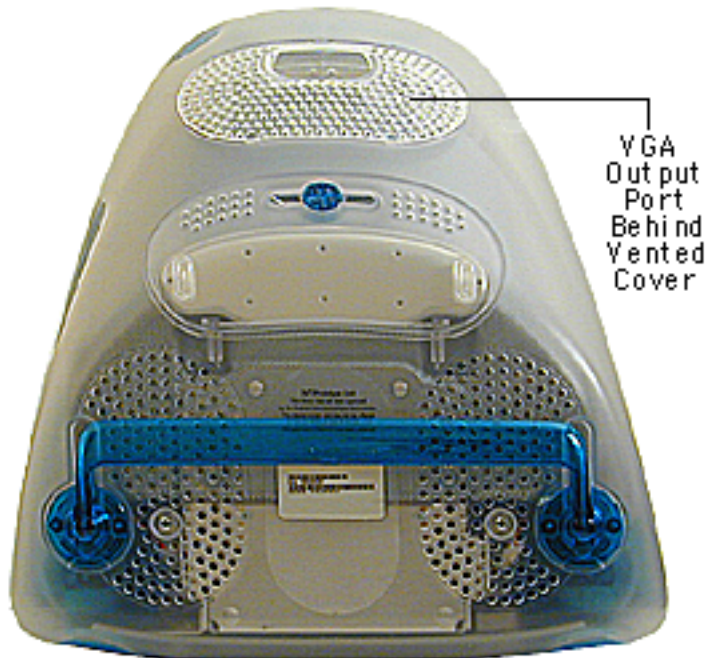


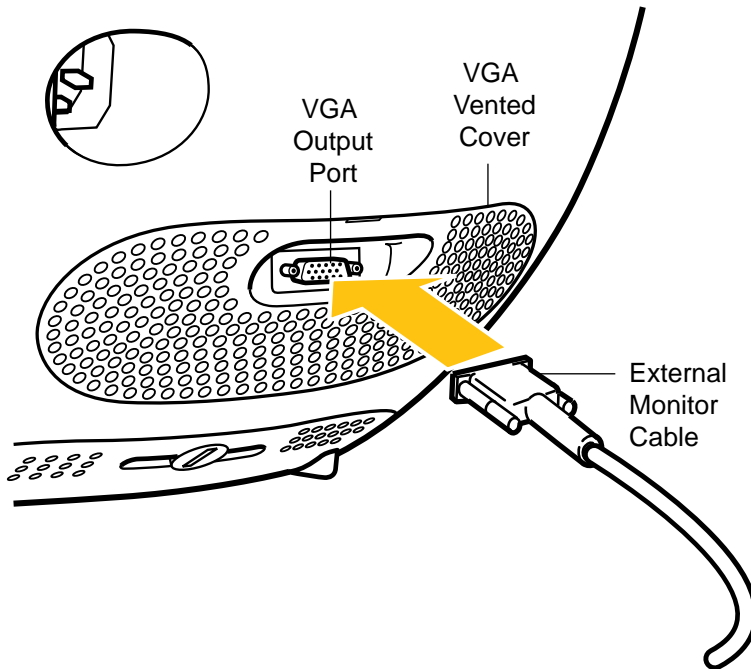
Connect an External Monitor

The iMac (Early 2001) computers have a VGA output port for an external video monitor. The external monitor shows the same information as the built-in display, a mode sometimes called hardware video mirroring.



1. Place the computer face down, on a soft, clean cloth or ESD mat.





2. Plug the external monitor cable into the VGA output port on the back of the computer.
3. Plug the monitor cable into the monitor port on the external monitor.
4. Plug the power cord in and press the Power button on the computer to turn it on.
5. Press the Power button on the external monitor to turn it on.