

8

7

6

5

4

3

2

1

- 1. ALL RESISTANCE VALUES ARE IN OHMS, 0.1 WATT +/- 5%.
- 2. ALL CAPACITANCE VALUES ARE IN MICROFARADS.
- 3. ALL CRYSTALS & OSCILLATOR VALUES ARE IN HERTZ.

REV	ZONE	ECN	DESCRIPTION OF CHANGE	CK APPD	ENG APPD
				DATE	DATE
03		425217	ENGINEERING RELEASED	02/13/06	?

# SCHEM, PHASER, M9

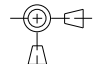

## EVT2

### 1/31/06

PDF PAGE	CSA PAGE	CONTENTS	SYNC MASTER	DATE
1	1	Table of Contents	N/A	N/A
2	2		MASTER	N/A
3	3	Cross Reference Page		
4	4	Cross Reference Page		

PART#	QTY	DESCRIPTION	REFERENCE DESIGNATOR(S)	CRITICAL	BOM OPTION
000-0041	1	PLACEHOLDER FOR EEE/CCC INFO	[EEE:UR2]	CRITICAL	

PART#	QTY	DESCRIPTION	REFERENCE DESIGNATOR(S)	BOM OPTION
051-7031	1	SCHEM, PHASER, M9	SCH1	
820-1959	1	PCBF, PHASER, M9	PCB1	

<p style="text-align: center;">DIMENSIONS ARE IN MILLIMETERS</p> <p>XX : _____</p> <p>X.XX : _____</p> <p>X.XXX : _____</p> <p>ANGLES : _____</p> <p style="text-align: center;">DO NOT SCALE DRAWING</p> <p style="text-align: center;">           THIRD ANGLE PROJECTION       </p>	<b>METRIC</b>	<p style="text-align: center;">  Apple Computer Inc.         </p> <p style="text-align: center; font-size: small;">           NOTICE OF PROPRIETARY PROPERTY            THE INFORMATION CONTAINED HEREIN IS THE PROPRIETARY PROPERTY OF APPLE COMPUTER, INC. THE POSSESSOR AGREES TO THE FOLLOWING:            I TO MAINTAIN THE DOCUMENT IN CONFIDENCE            II NOT TO REPRODUCE OR COPY IT            III NOT TO REVEAL OR PUBLISH IN WHOLE OR PART         </p> <p style="text-align: center; font-size: large;"> <b>SCHEM, PHASER, M9</b> </p> <p style="text-align: center;">           DRAWING NUMBER <b>051-7031</b>    REV. <b>03</b> </p> <p style="text-align: right; font-size: x-small;">           SHT 1 OF 4         </p>
DRAPTER <input type="checkbox"/> DESIGN CK <input type="checkbox"/> ENG APPD <input type="checkbox"/> MFG APPD <input type="checkbox"/> QA APPD <input type="checkbox"/> DESIGNER <input type="checkbox"/> RELEASE <input type="checkbox"/> SCALE NONE <input type="checkbox"/>	MATERIAL/FINISH NOTED AS APPLICABLE	TITLE SIZE <b>D</b>

8

7

6

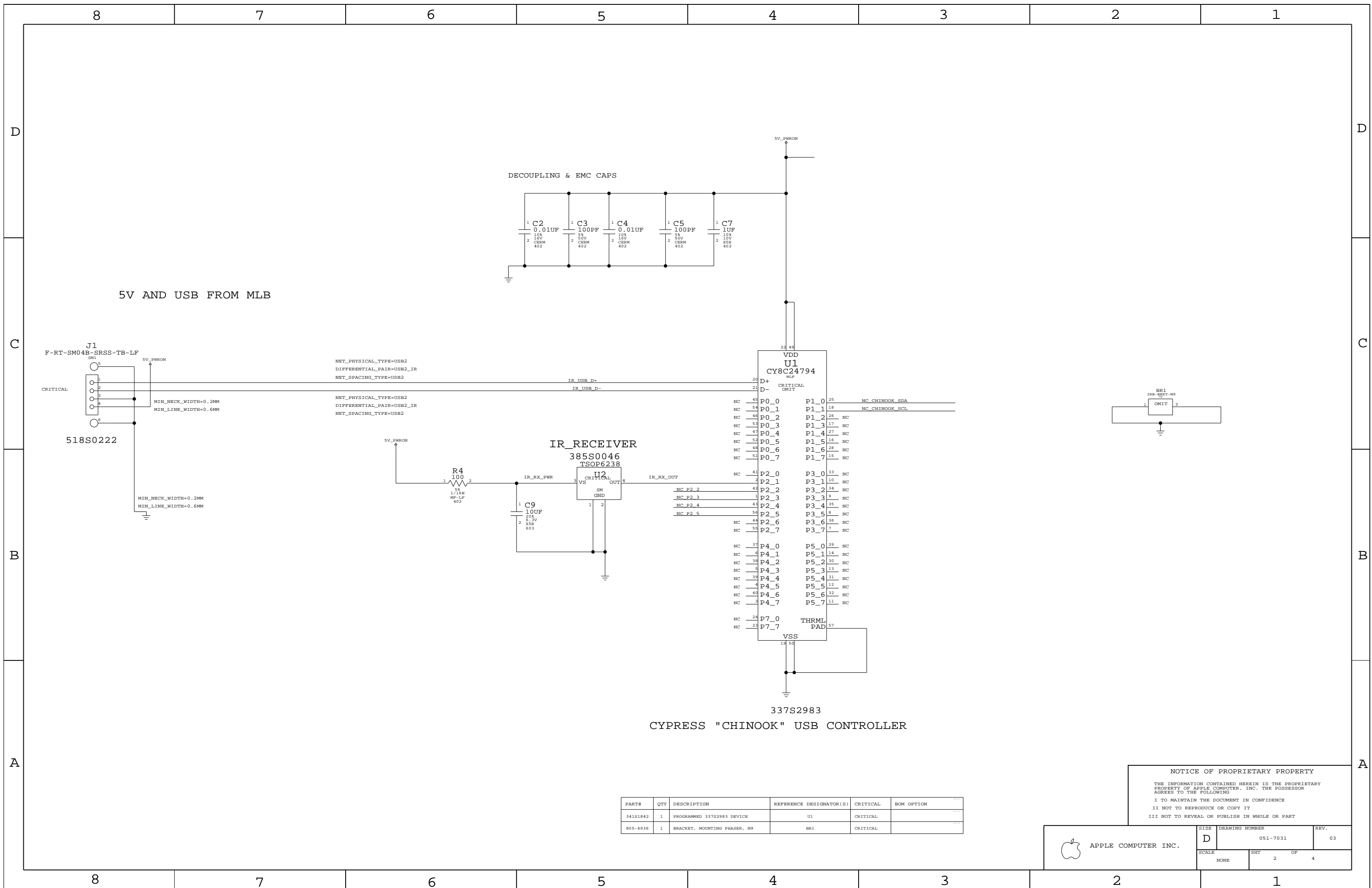
5

4

3

2

1



PART#	QTY	DESCRIPTION	REFERENCE DESIGNATOR(S)	CRITICAL	BOM OPTION
34181842	1	PROGRAMMED 33782983 DEVICE	U1	CRITICAL	
805-6936	1	BRACKET, MOUNTING PHASER, M9	BR1	CRITICAL	

**NOTICE OF PROPRIETARY PROPERTY**  
 THE INFORMATION CONTAINED HEREIN IS THE PROPRIETARY PROPERTY OF APPLE COMPUTER, INC. THE POSSESSOR AGREES TO THE FOLLOWING  
 I TO MAINTAIN THE DOCUMENT IN CONFIDENCE  
 II NOT TO REPRODUCE OR COPY IT  
 III NOT TO REVEAL OR PUBLISH IN WHOLE OR PART

APPLE COMPUTER INC.	SIZE <b>D</b>	DRAWING NUMBER 051-7031	REV. 03
	SCALE NONE	SHEET 2	OF 4

8

7

6

5

4

3

2

1

```

Title:      Basenet Report
Design:     irb
Date:       Jan 30 16:58:56 2006

Base nets and synonyms for irb_lib.IRB(@irb_lib.irb(sch_1))
Base Signal      Synonyms      Location([Zone][dir])
IR_RX_OUT         IR_RX_OUT - @irb_lib.IRB      2B5
IR_RX_PWR         IR_RX_PWR - @irb_lib.IRB      2B5
IR_USB_D+         IR_USB_D+ - @irb_lib.IRB      2C5
IR_USB_D-         IR_USB_D- - @irb_lib.IRB      2C5
NC_CHINOOK_SCL   NC_CHINOOK_SCL - @irb_lib.IRB  2C3
NC_CHINOOK_SDA   NC_CHINOOK_SDA - @irb_lib.IRB  2C3
NC_P2_2          NC_P2_2 - @irb_lib.IRB        2B5
NC_P2_3          NC_P2_3 - @irb_lib.IRB        2B5
NC_P2_4          NC_P2_4 - @irb_lib.IRB        2B5
NC_P2_5          NC_P2_5 - @irb_lib.IRB        2B5

```

D

D

C

C

B

B

A

A

8

7

6

5

4

3

2

1

8

7

6

5

4

3

2

1

Title: Cref Part Report  
Design: irb  
Date: Jan 30 16:58:56 2006

BR1	BRACKET_2F_TH	irb[2C2]
C2	CAP_402	irb[2C5]
C3	CAP_402	irb[2C5]
C4	CAP_402	irb[2C5]
C5	CAP_402	irb[2C5]
C7	CAP_402	irb[2C4]
C9	CAP_603	irb[2B5]
J1	CON_F4RT_S2MT_SM_SMI	irb[2C8]
R4	RES_402	irb[2B6]
U1	CY8C24794_MLF	irb[2C4]
U2	TSCP6238_SM	irb[2B5]
ZH1	SLOT_TH	irb[2C4]
ZH2	SLOT_TH	irb[2C4]

D

D

C

C

B

B

A

A

8

7

6

5

4

3

2

1