

8. Block Diagram and Schematic

<p style="text-align: center;">SAMSUNG PROPRIETARY THIS DOCUMENT CONTAINS CONFIDENTIAL INFORMATION AND IS THE PROPERTY OF SAMSUNG ELECTRONICS CO.'S PROPERTY. IT IS NOT TO BE DISCLOSED TO OR REPLICATED FOR OTHERS EXCEPT AS AUTHORIZED BY SAMSUNG.</p>		
<h1>Bloomington</h1>		
<p>CPU : INTEL PINEVIEW-W-M Chip Set : INTEL TIGERPOINT-M Remarks :</p>		
<p>Model Name : PINE TRAIL-M PCB Part No :</p>		
<p>Dev. Step : PV2 Revision : 0.9 T.R. Date : 2009.11.09</p>		
DRAW	CHECK	APPROVAL
<p style="font-size: 2em; opacity: 0.3; transform: rotate(-45deg);">Samsung Confidential</p>		
<h3>Table of Contents</h3>		
Page. 1	COVER	
Page. 2	OPERATION BLOCK DIAGRAM	
Page. 3	BOARD INFORMATION	
Page. 4~6	POWER DIAGRAM / SEQUENCE	
Page. 7	CLOCK DISTRIBUTION	
Page. 8	CLOCK GENERATOR (CK-505M)	
Page. 9	THERMAL MONITOR	
Page. 10~12	PINEVIEW-W (N450/N470 CPU)	
Page. 13~15	TIGERPOINT (NM10 CHIPSET)	
Page. 16	SPI ROM & DEBUG PORT	
Page. 17	DDR2 SODIMM	
Page. 18	CRT CONN.	
Page. 19	LCD (LVDS) CONN.	
Page. 20	HD DECODER (BROADCOM BCM70015)	
Page. 21	AUDIO CODEC (ALC269Q-GR)	
Page. 22	AMP & WOOFER	
Page. 23	HP & MIC & INT. MIC	
Page. 24	LAN (10/100)	
Page. 25	HDD CONNECTOR (SATA)	
Page. 26	MINI-CARD (Wireless & HSDPA/WiBro)	
Page. 27	USB	
Page. 28	BT & CAMERA & TSP	
Page. 29	CARDBUS CONTROLLER (GL823)	
Page. 30	MICOM (MEC1308)	
Page. 31	KBD CONN & MICOM GLUE LOGIC	
Page. 32	LED Logic	
Page. 33	Free Fall Sensor	
Page. 34	CPU VRM POWER (VCC CORE)	
Page. 35	CHIPSET POWER (P1.05V, P1.5V & P1.2V)	
Page. 36	DDR2 POWER	
Page. 37	P3.3V AUX & P5V_AUX	
Page. 38	CHARGER	
Page. 39	GRAPHICS POWER (P0.89V)	
Page. 40	SWITCHED POWER	
Page. 41	POWER DISCHARGER	
Page. 42	BLANK PAGE (TBD)	
Page. 43	MOUNT HOLE	
Page. 44~45	TEST POINTS	
Page. 46		
Page. 47		
Page. 48		
Page. 49		
Page. 50		
Page. 51		
Page. 52		
Page. 53		
Page. 54		
Page. 55		
Page. 56		
Page. 57		
Page. 58		
Page. 59		
Page. 60		
Page. 61		
Page. 62		
Page. 63		
Page. 64		
Page. 65		
Page. 66		
Page. 67		
Page. 68		
Page. 69		
Page. 70		
Page. 71		
Page. 72		
Page. 73		
Page. 74		
Page. 75		
Page. 76		
Page. 77		
Page. 78		
Page. 79		
Page. 80		
Page. 81		
Page. 82		
Page. 83		
Page. 84		
Page. 85		
Page. 86		
Page. 87		
Page. 88		
Page. 89		
Page. 90		
Page. 91		
Page. 92		
Page. 93		
Page. 94		
Page. 95		
Page. 96		
Page. 97		
Page. 98		
Page. 99		
Page. 100		
Page. 101		
Page. 102		
Page. 103		
Page. 104		
Page. 105		
Page. 106		
Page. 107		
Page. 108		
Page. 109		
Page. 110		
Page. 111		
Page. 112		
Page. 113		
Page. 114		
Page. 115		
Page. 116		
Page. 117		
Page. 118		
Page. 119		
Page. 120		
Page. 121		
Page. 122		
Page. 123		
Page. 124		
Page. 125		
Page. 126		
Page. 127		
Page. 128		
Page. 129		
Page. 130		
Page. 131		
Page. 132		
Page. 133		
Page. 134		
Page. 135		
Page. 136		
Page. 137		
Page. 138		
Page. 139		
Page. 140		
Page. 141		
Page. 142		
Page. 143		
Page. 144		
Page. 145		
Page. 146		
Page. 147		
Page. 148		
Page. 149		
Page. 150		
Page. 151		
Page. 152		
Page. 153		
Page. 154		
Page. 155		
Page. 156		
Page. 157		
Page. 158		
Page. 159		
Page. 160		
Page. 161		
Page. 162		
Page. 163		
Page. 164		
Page. 165		
Page. 166		
Page. 167		
Page. 168		
Page. 169		
Page. 170		
Page. 171		
Page. 172		
Page. 173		
Page. 174		
Page. 175		
Page. 176		
Page. 177		
Page. 178		
Page. 179		
Page. 180		
Page. 181		
Page. 182		
Page. 183		
Page. 184		
Page. 185		
Page. 186		
Page. 187		
Page. 188		
Page. 189		
Page. 190		
Page. 191		
Page. 192		
Page. 193		
Page. 194		
Page. 195		
Page. 196		
Page. 197		
Page. 198		
Page. 199		
Page. 200		
Page. 201		
Page. 202		
Page. 203		
Page. 204		
Page. 205		
Page. 206		
Page. 207		
Page. 208		
Page. 209		
Page. 210		
Page. 211		
Page. 212		
Page. 213		
Page. 214		
Page. 215		
Page. 216		
Page. 217		
Page. 218		
Page. 219		
Page. 220		
Page. 221		
Page. 222		
Page. 223		
Page. 224		
Page. 225		
Page. 226		
Page. 227		
Page. 228		
Page. 229		
Page. 230		
Page. 231		
Page. 232		
Page. 233		
Page. 234		
Page. 235		
Page. 236		
Page. 237		
Page. 238		
Page. 239		
Page. 240		
Page. 241		
Page. 242		
Page. 243		
Page. 244		
Page. 245		
Page. 246		
Page. 247		
Page. 248		
Page. 249		
Page. 250		
Page. 251		
Page. 252		
Page. 253		
Page. 254		
Page. 255		
Page. 256		
Page. 257		
Page. 258		
Page. 259		
Page. 260		
Page. 261		
Page. 262		
Page. 263		
Page. 264		
Page. 265		
Page. 266		
Page. 267		
Page. 268		
Page. 269		
Page. 270		
Page. 271		
Page. 272		
Page. 273		
Page. 274		
Page. 275		
Page. 276		
Page. 277		
Page. 278		
Page. 279		
Page. 280		
Page. 281		
Page. 282		
Page. 283		
Page. 284		
Page. 285		
Page. 286		
Page. 287		
Page. 288		
Page. 289		
Page. 290		
Page. 291		
Page. 292		
Page. 293		
Page. 294		
Page. 295		
Page. 296		
Page. 297		
Page. 298		
Page. 299		
Page. 300		
Page. 301		
Page. 302		
Page. 303		
Page. 304		
Page. 305		
Page. 306		
Page. 307		
Page. 308		
Page. 309		
Page. 310		
Page. 311		
Page. 312		
Page. 313		
Page. 314		
Page. 315		
Page. 316		
Page. 317		
Page. 318		
Page. 319		
Page. 320		
Page. 321		
Page. 322		
Page. 323		
Page. 324		
Page. 325		
Page. 326		
Page. 327		
Page. 328		
Page. 329		
Page. 330		
Page. 331		
Page. 332		
Page. 333		
Page. 334		
Page. 335		
Page. 336		
Page. 337		
Page. 338		
Page. 339		
Page. 340		
Page. 341		
Page. 342		
Page. 343		
Page. 344		
Page. 345		
Page. 346		
Page. 347		
Page. 348		
Page. 349		
Page. 350		
Page. 351		
Page. 352		
Page. 353		
Page. 354		
Page. 355		
Page. 356		
Page. 357		
Page. 358		
Page. 359		
Page. 360		
Page. 361		
Page. 362		
Page. 363		
Page. 364		
Page. 365		
Page. 366		
Page. 367		
Page. 368		
Page. 369		
Page. 370		
Page. 371</		

8. Block Diagram and Schematic

BOARD INFORMATION

SCHEMATIC ANNOTATIONS AND BOARD INFORMATION

PCI Devices		IDSEL#	REQINT#	Interrupts
USB PCI Bridge	AD24(Internal) AD31(Internal) AD24(Internal)			Programmable

PC / SMB Address

Devices	Address	Hex	Bus
ICPRTM	Master		SMBUS Master
SCSMM	110 000X	D0h	Clock Unused Clock Output Disable
SCSMM	110 000X	A0h	Thermal Sensor
CPU Thermal Sensor	0111 101X	7Ah	

USB PORT Assign

Port Number	ASSIGNED TO	Port Number	ASSIGNED TO
UHCL_0	USB PORT	UHCL_2	USB PORT
UHCL_1	Wireless LAN	UHCL_3	HSDPA
UHCL_3	BLUETOOTH		CAMERA

Voltage Rails

Power Rail	Descriptions
PRIC_BAT	3.3V (can drop to 2.0V min. in G3 state) supply for the RTC wall.
PRIC_GVCPPI	Primary DC system power supply (9 to 19V)
P3_3V_MICOM	3.3V always power rail (in S3-S5)
P1_1V_AUX	1.5V switched power rail (off in S3-S5)
P0_5V	0.9V power rail for DDR (off in S4-S5)
P5V_AUX	5.0V power rail (off in S4-S5)
P5V_2_AUX	5.0V switched power rail (off in S3-S5)
P3_3V	3.3V switched power rail (off in S3-S5)
CPU_CORE	Core voltage for Atom CPU

PCI Express Assign

Port Number	ASSIGNED TO
1	Mini Card 1(Wireless LAN)
3	Mini Card 2 (HSDPA/WiBro)

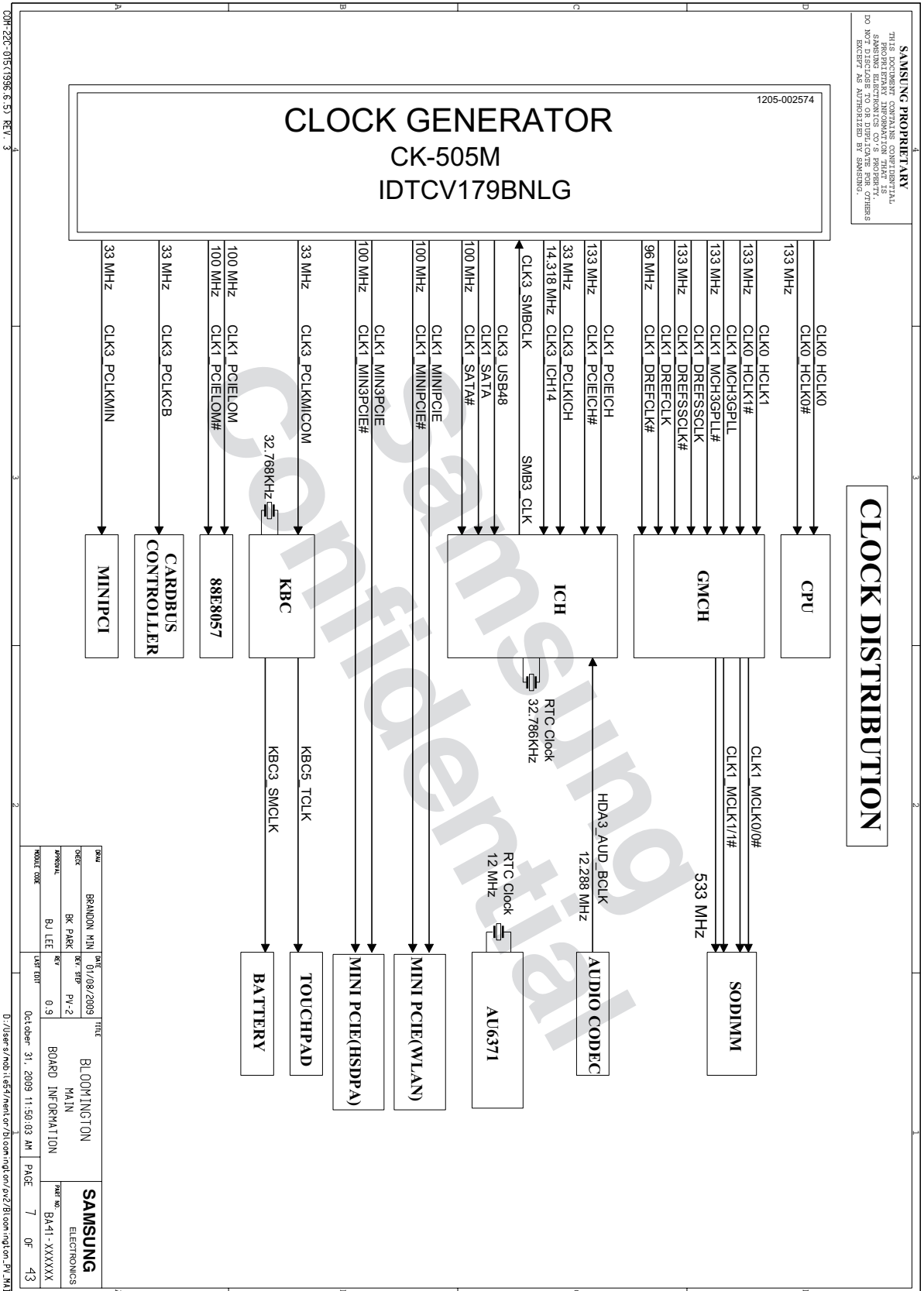
DATE	01/08/2009	TITLE	BLOOMINGTON MAIN POWER SEQUENCE
DESIGNER	BRANDON MIN	REV	PV-2
PERSONAL	BK PARK	DATE	0.9
MODEL CODE	BJ LEE	DATE	October 31, 2009 11:50:03 AM
		PAGE	3
		OF	43

SAMSUNG
ELECTRONICS

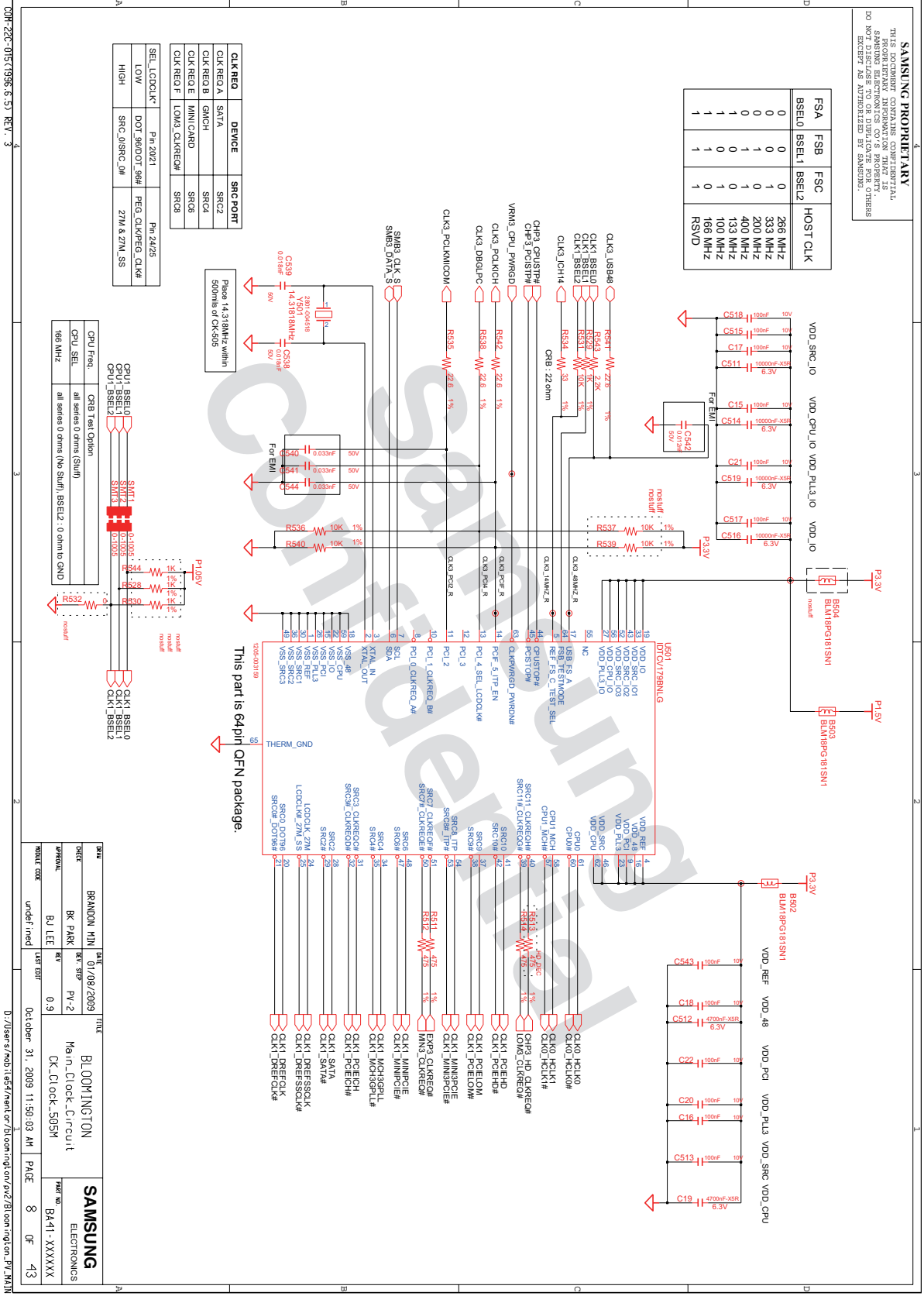
Part No. BA-1-XXXXXX

D:\Users\smob1457\ntwr\or\bu\com\ng\on\o22\B1rom\ng\on_PV_MAIN

8. Block Diagram and Schematic

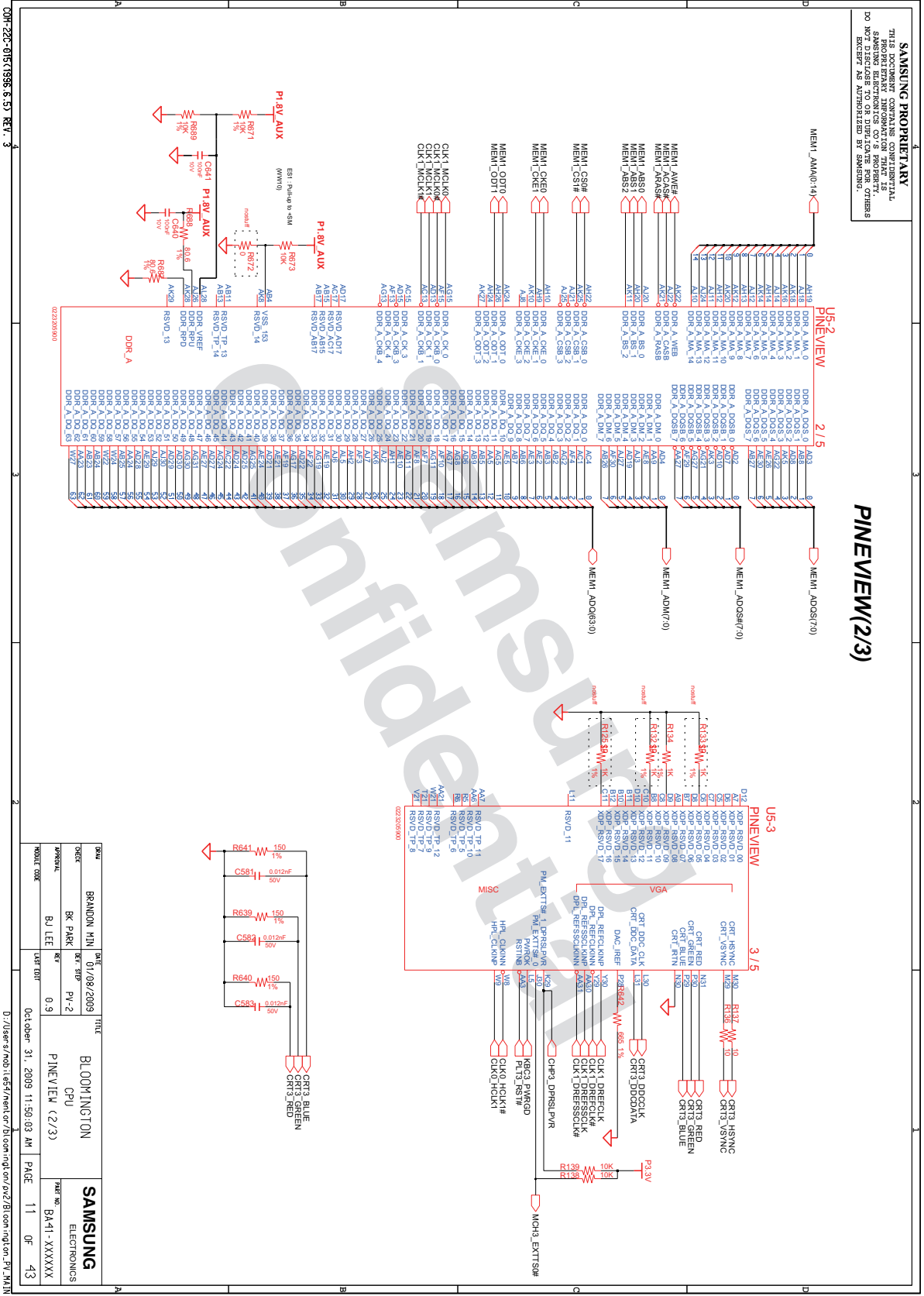


8. Block Diagram and Schematic



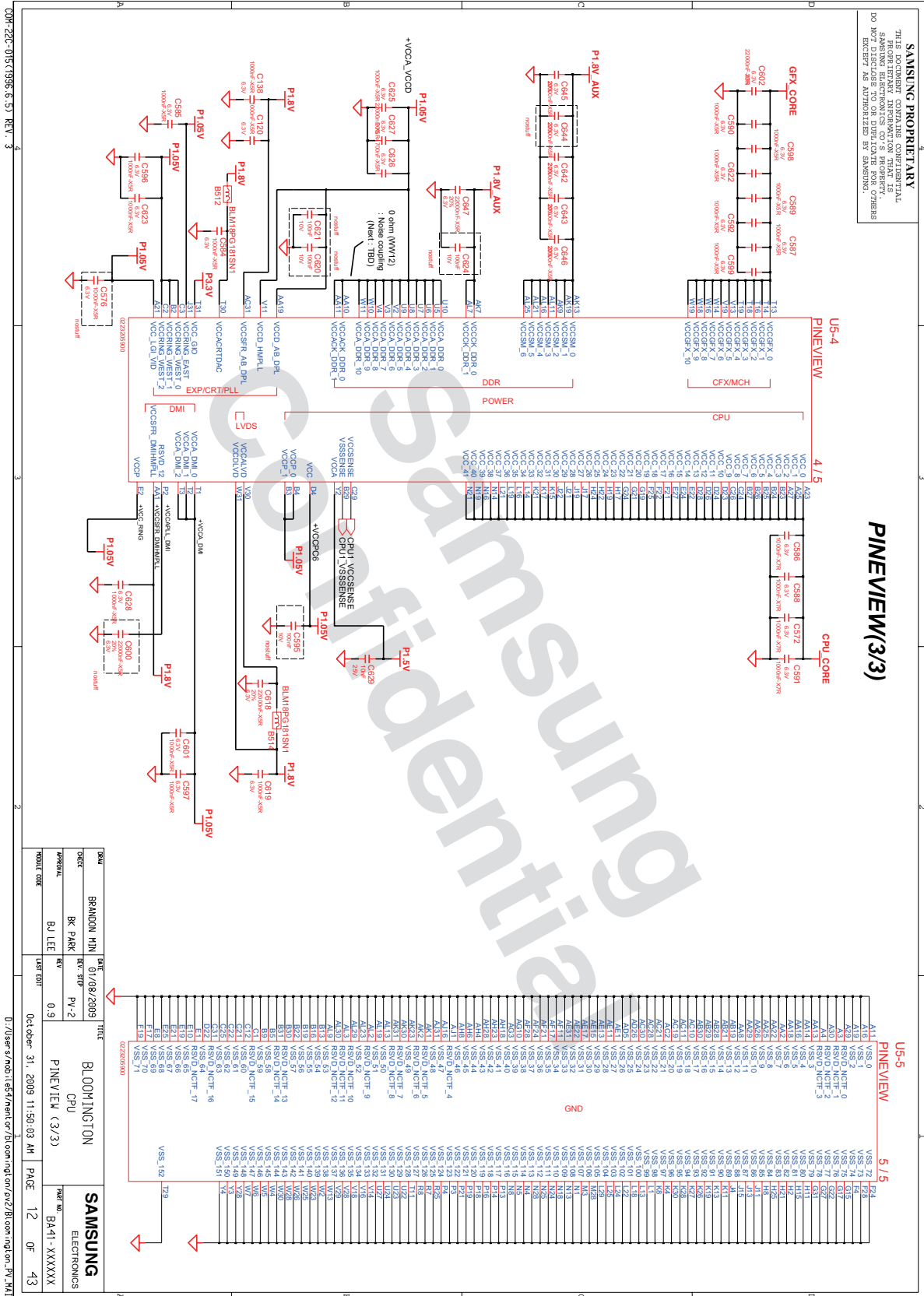
- 이 문서는 삼성전자의 기술 자산으로 승인자만이 사용할 수 있습니다 -
 - This Document can not be used without Samsung's authorization -

8. Block Diagram and Schematic



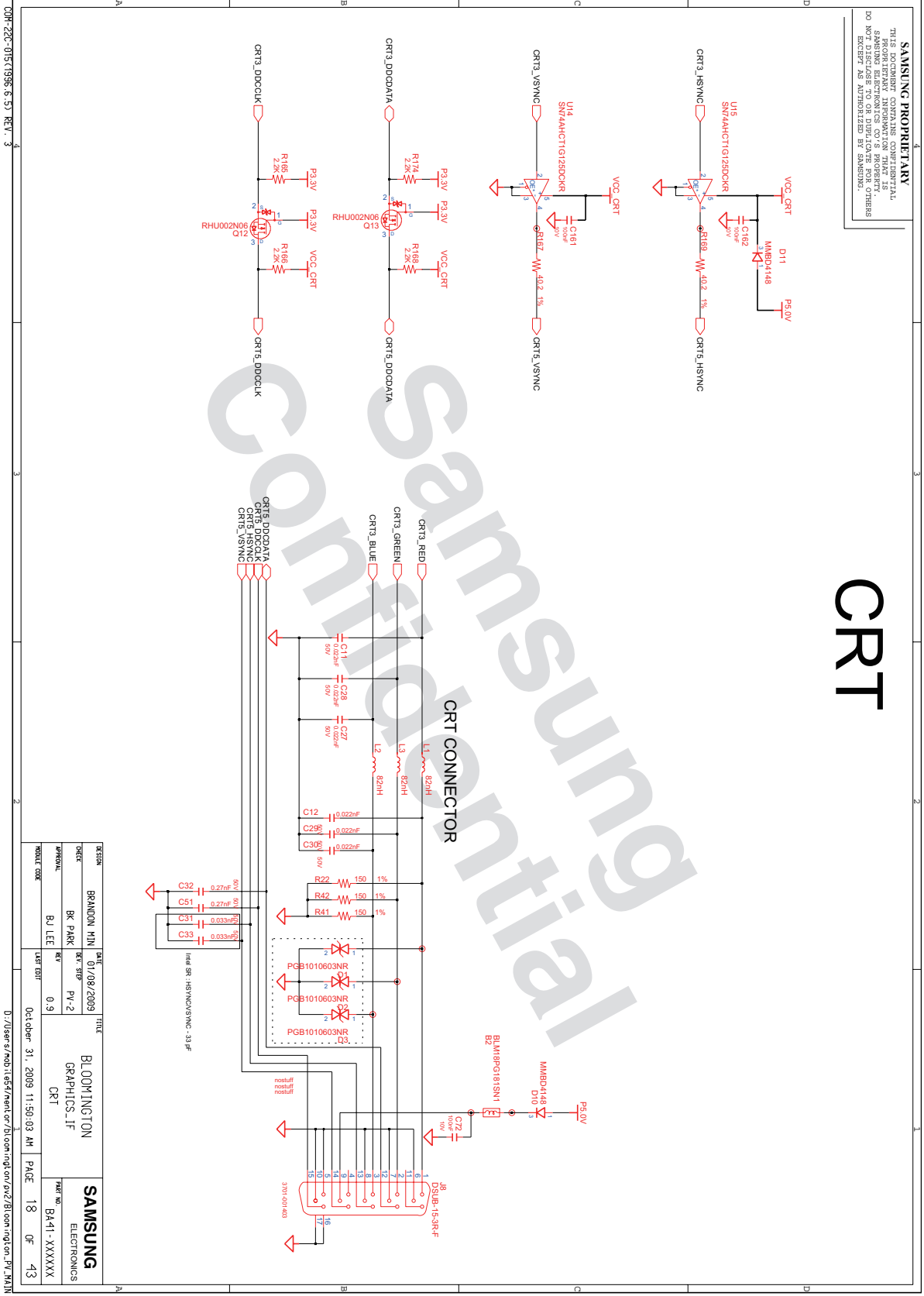
- 이 문서는 삼성전자의 기술 자산으로 승인자만이 사용할 수 있습니다 -
 - This Document can not be used without Samsung's authorization -

8. Block Diagram and Schematic



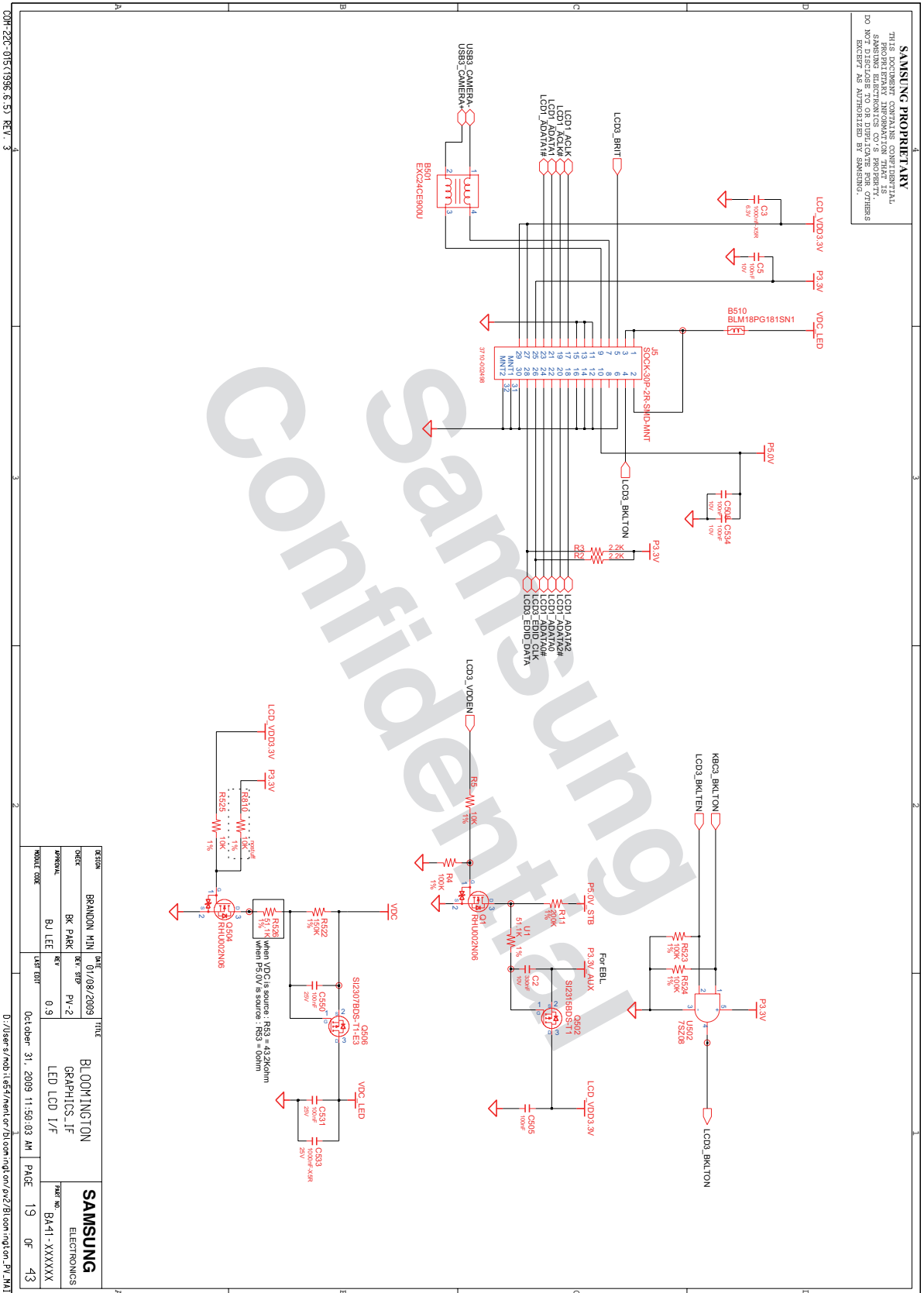
- 이 문서는 삼성전자의 기술 자산으로 승인자만이 사용할 수 있습니다 -
 - This Document can not be used without Samsung's authorization -

8. Block Diagram and Schematic

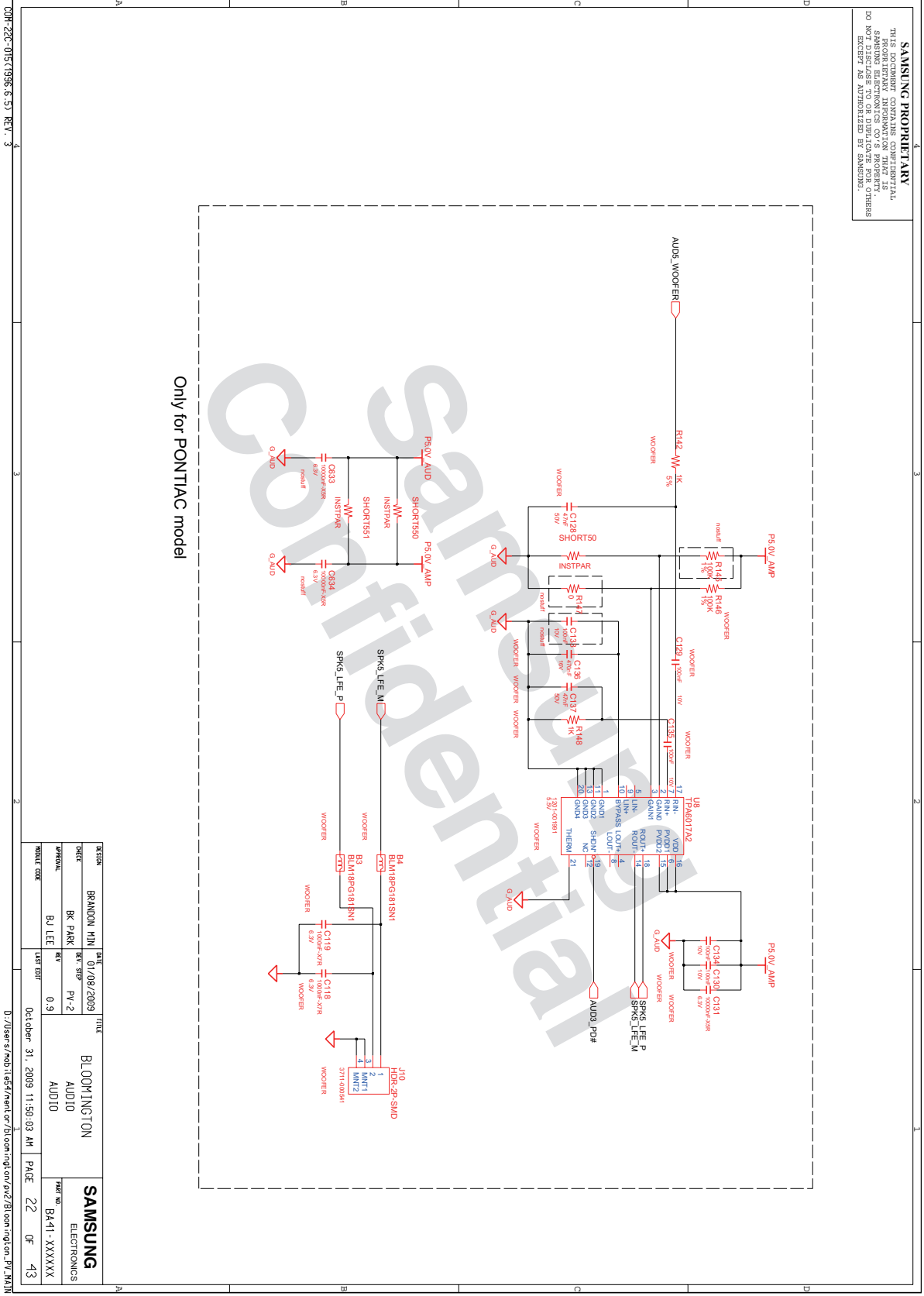


- 이 문서는 삼성전자의 기술 자산으로 승인자만이 사용할 수 있습니다 -
- This Document can not be used without Samsung's authorization -

8. Block Diagram and Schematic

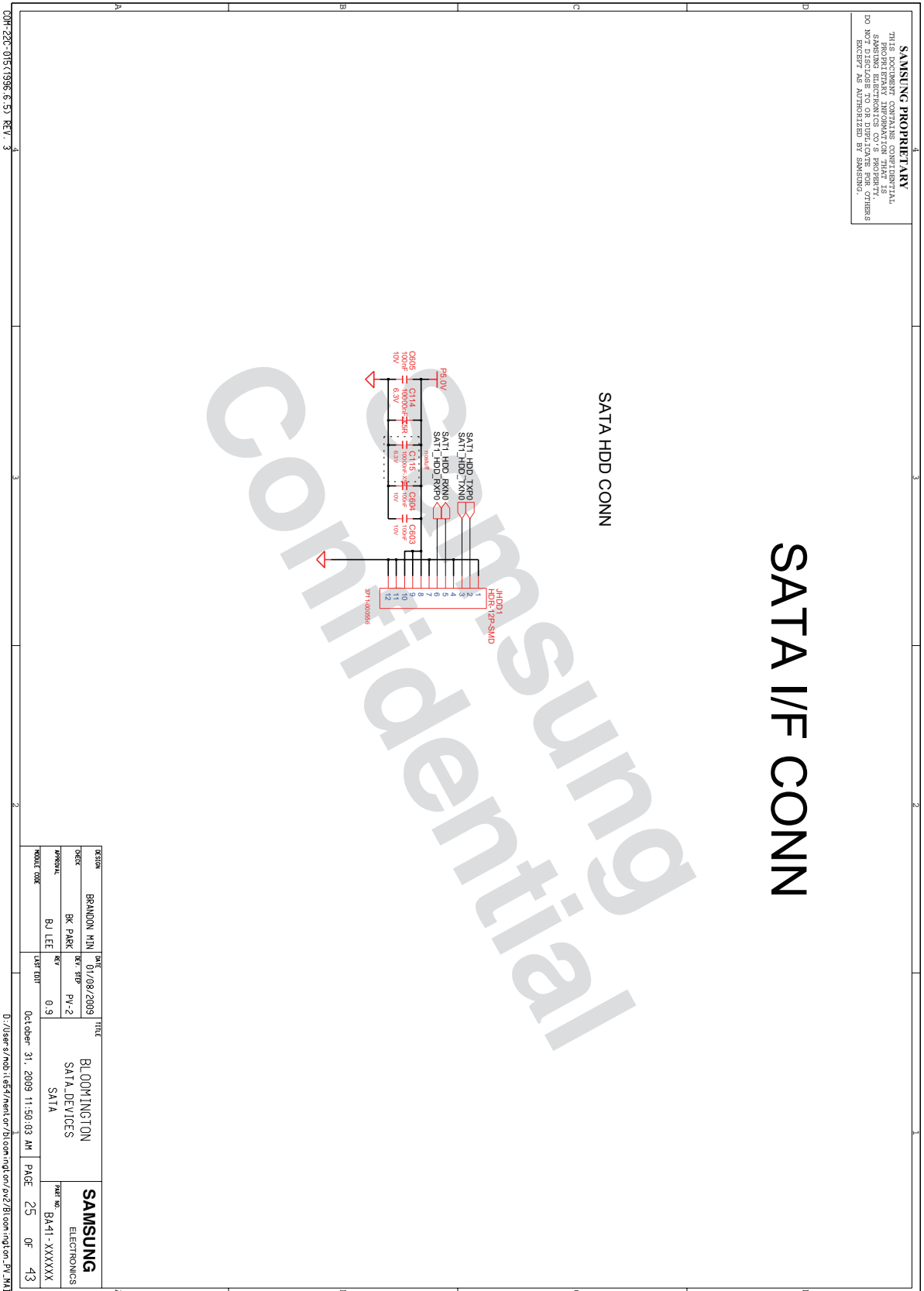


8. Block Diagram and Schematic



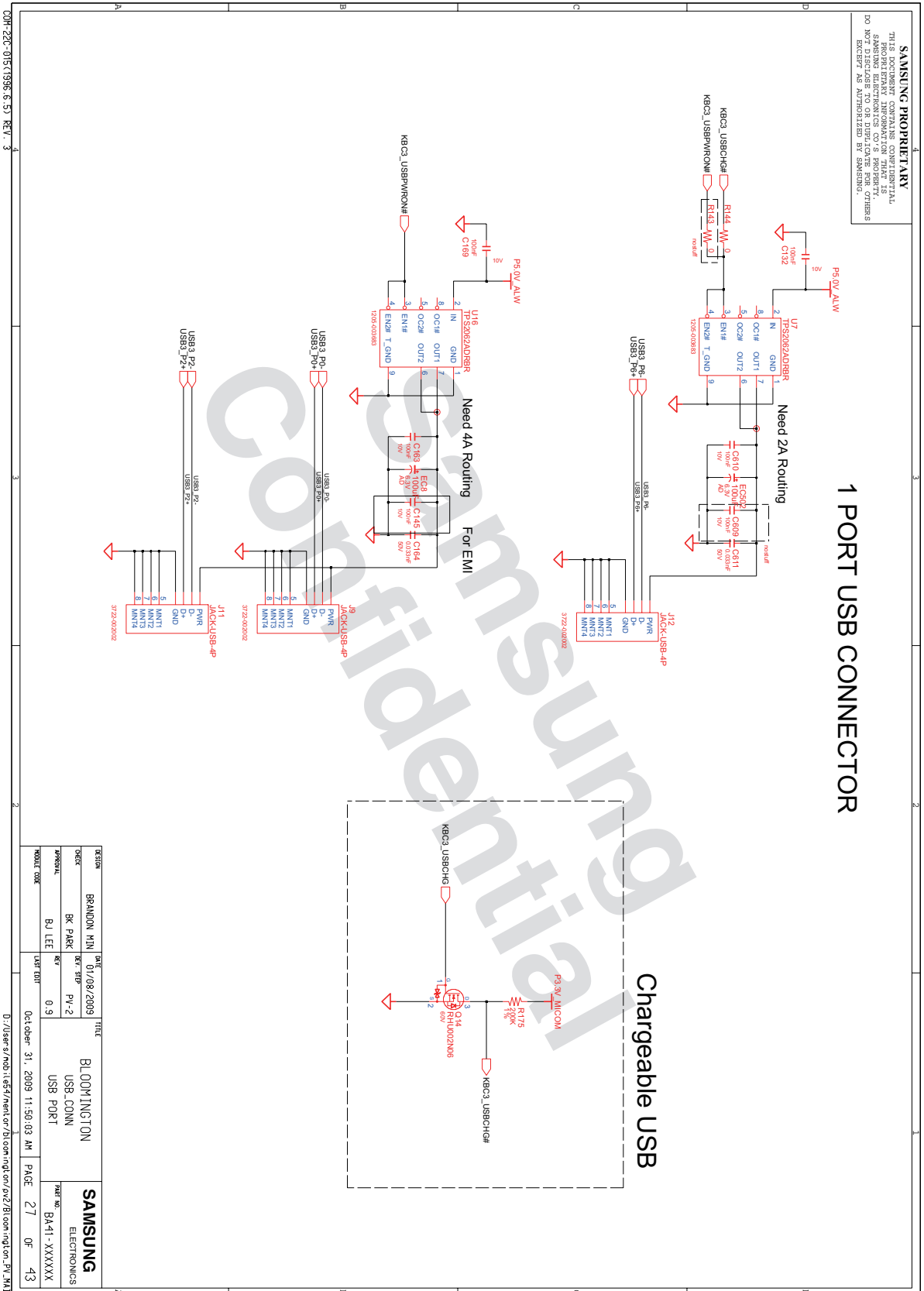
- 이 문서는 삼성전자의 기술 자산으로 승인자만이 사용할 수 있습니다 -
 - This Document can not be used without Samsung's authorization -

8. Block Diagram and Schematic



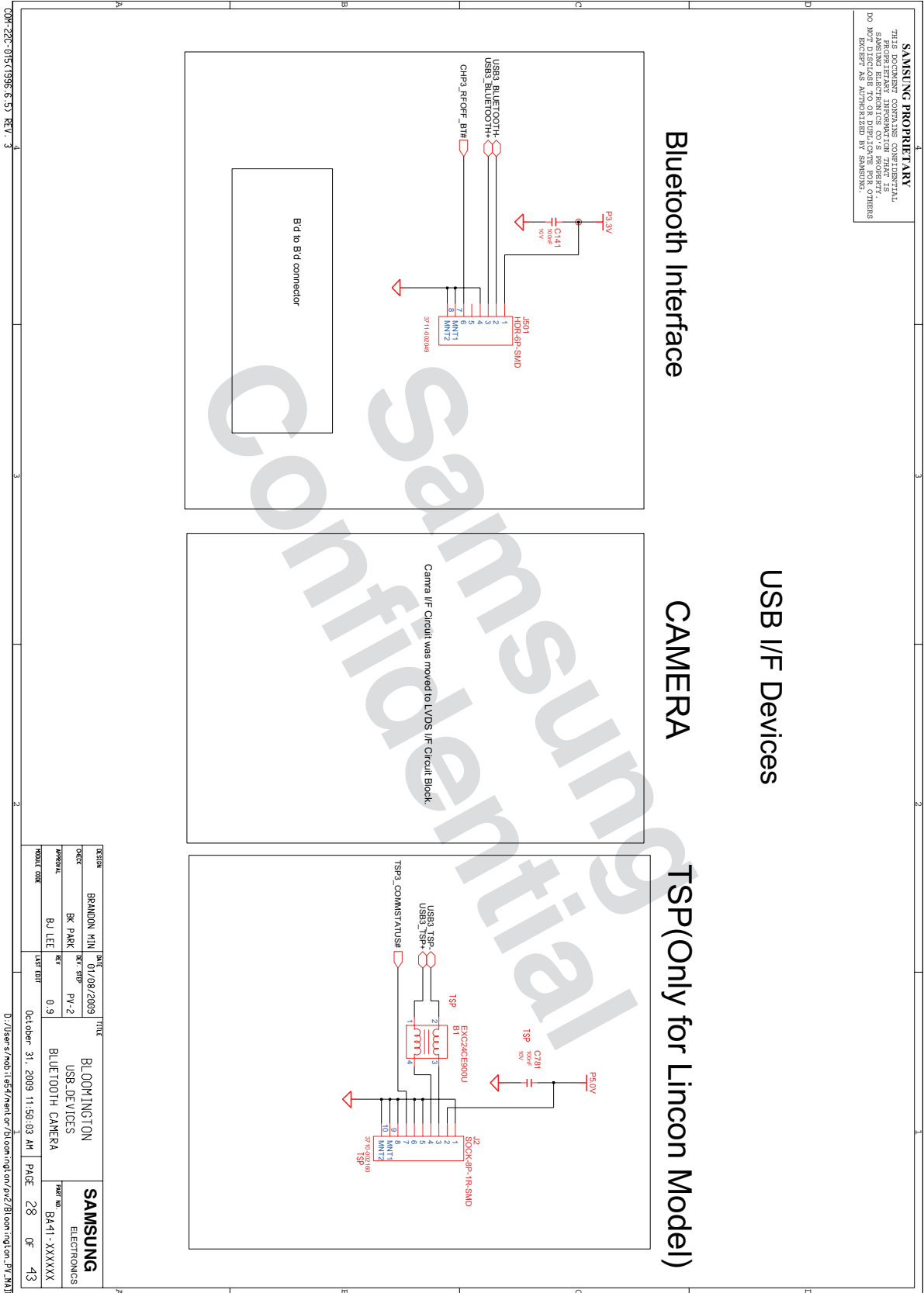
- 이 문서는 삼성전자의 기술 자산으로 승인자만이 사용할 수 있습니다 -
- This Document can not be used without Samsung's authorization -

8. Block Diagram and Schematic

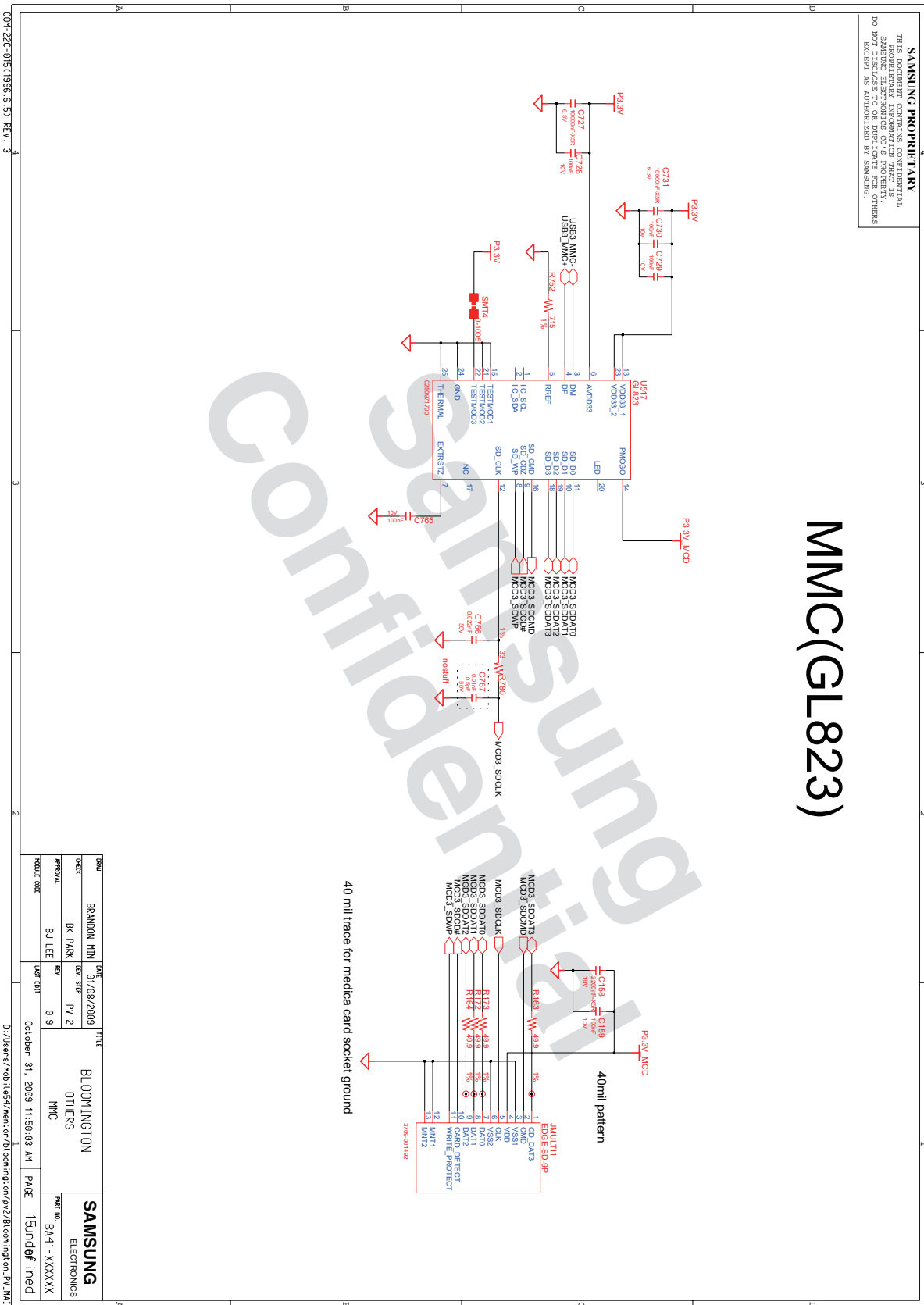


- 이 문서는 삼성전자의 기술 자산으로 승인자만이 사용할 수 있습니다 -
- This Document can not be used without Samsung's authorization -

8. Block Diagram and Schematic

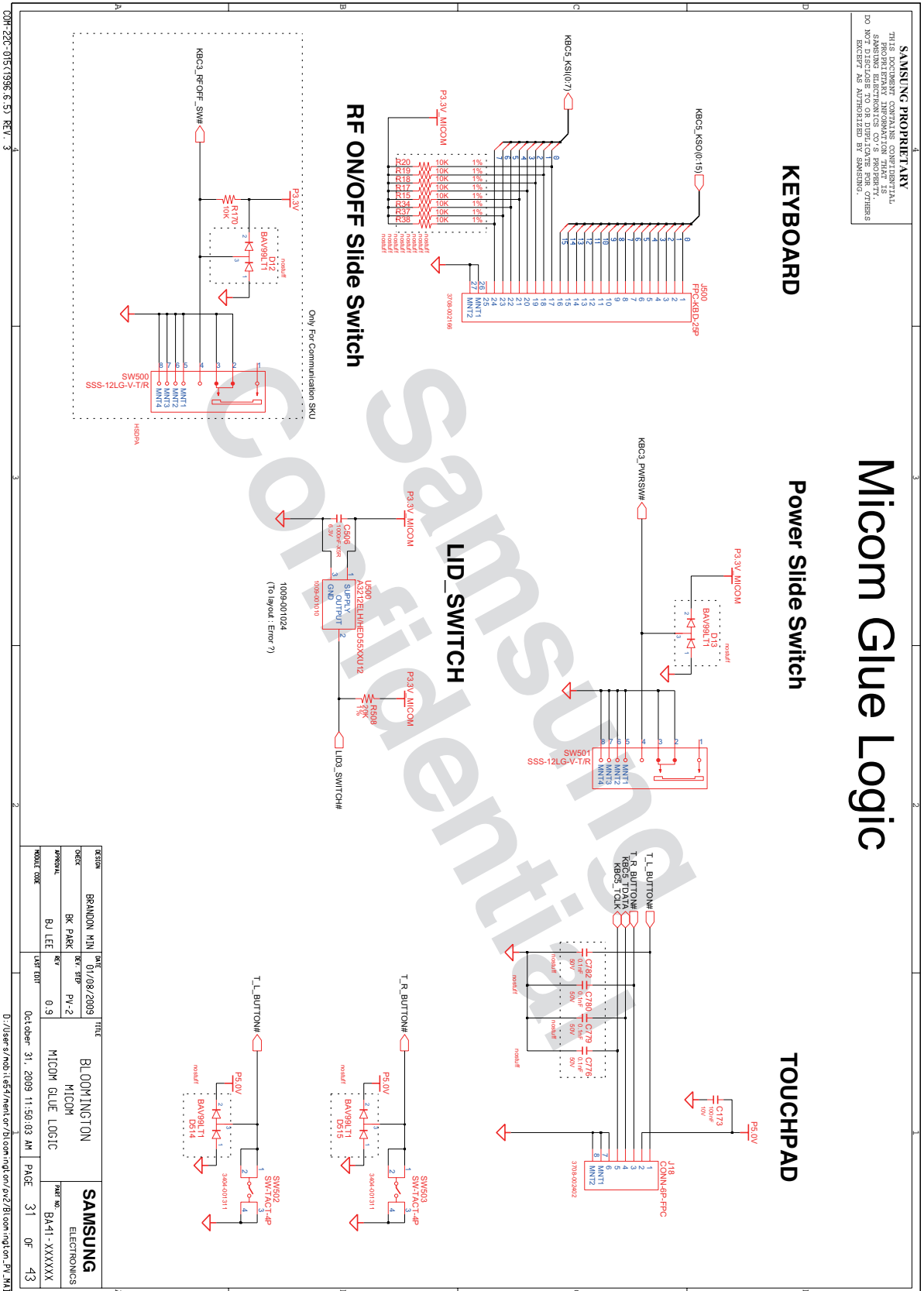


8. Block Diagram and Schematic

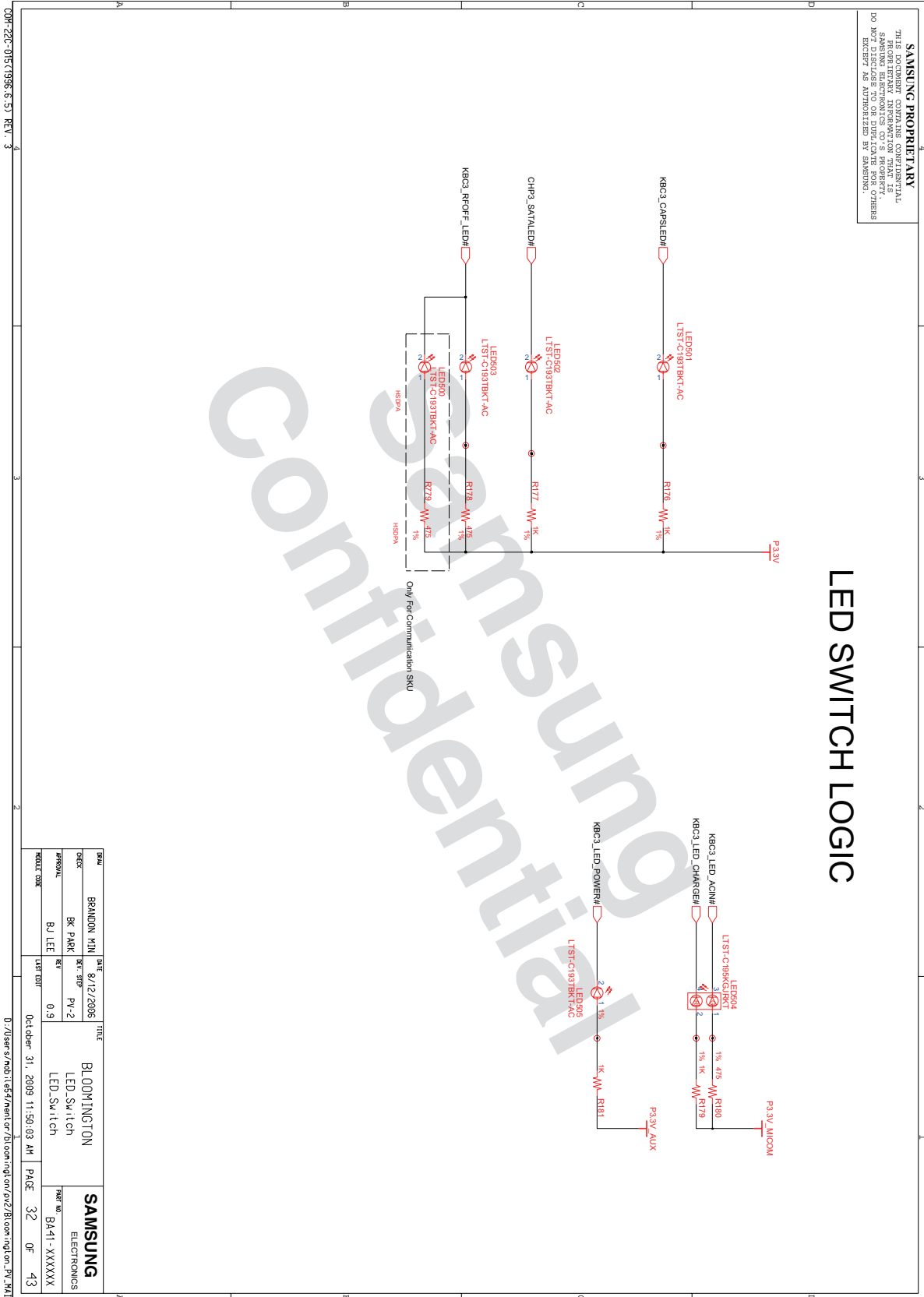


- 이 문서는 삼성전자의 기술 자산으로 승인자만이 사용할 수 있습니다 -
- This Document can not be used without Samsung's authorization -

8. Block Diagram and Schematic

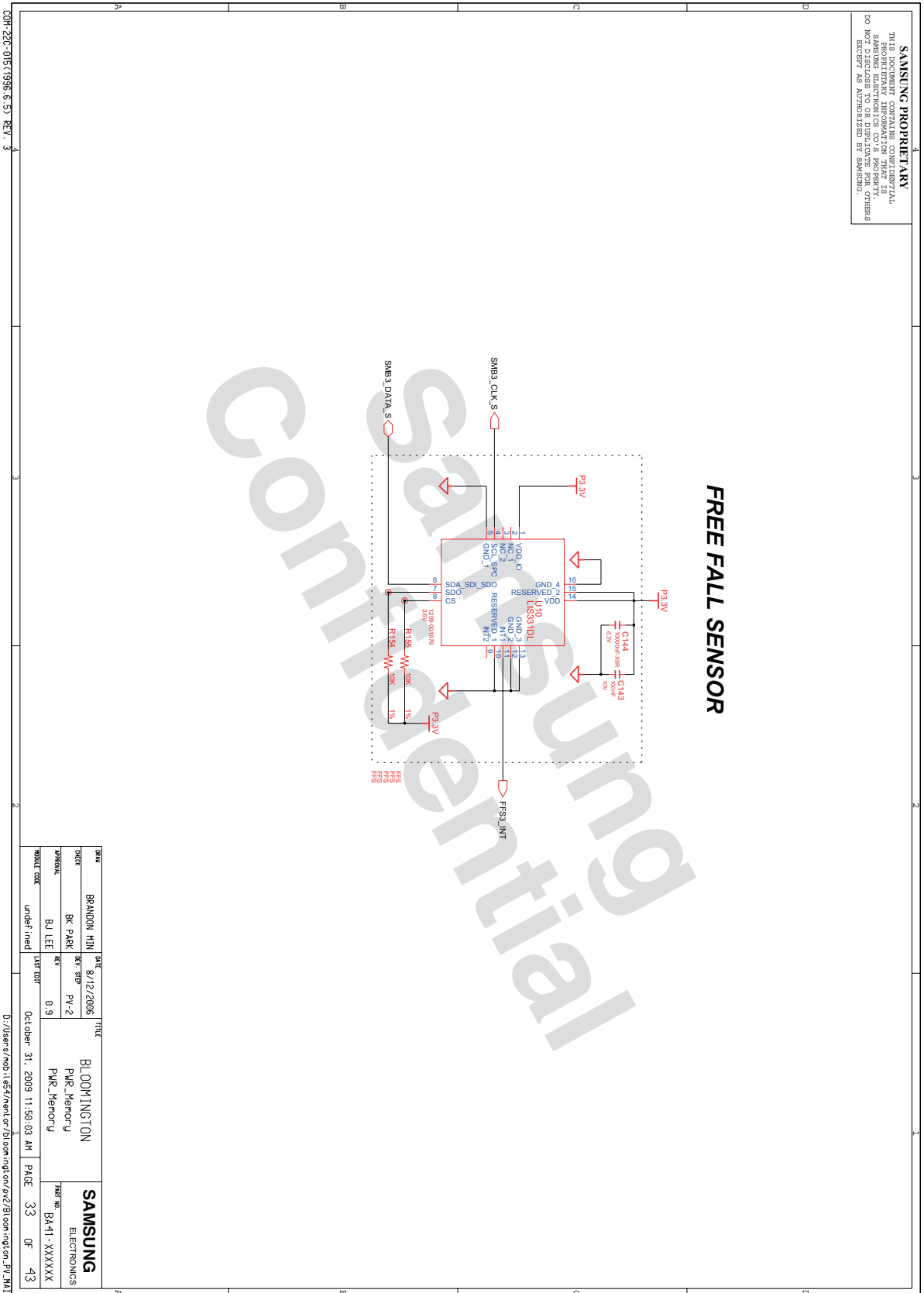


8. Block Diagram and Schematic

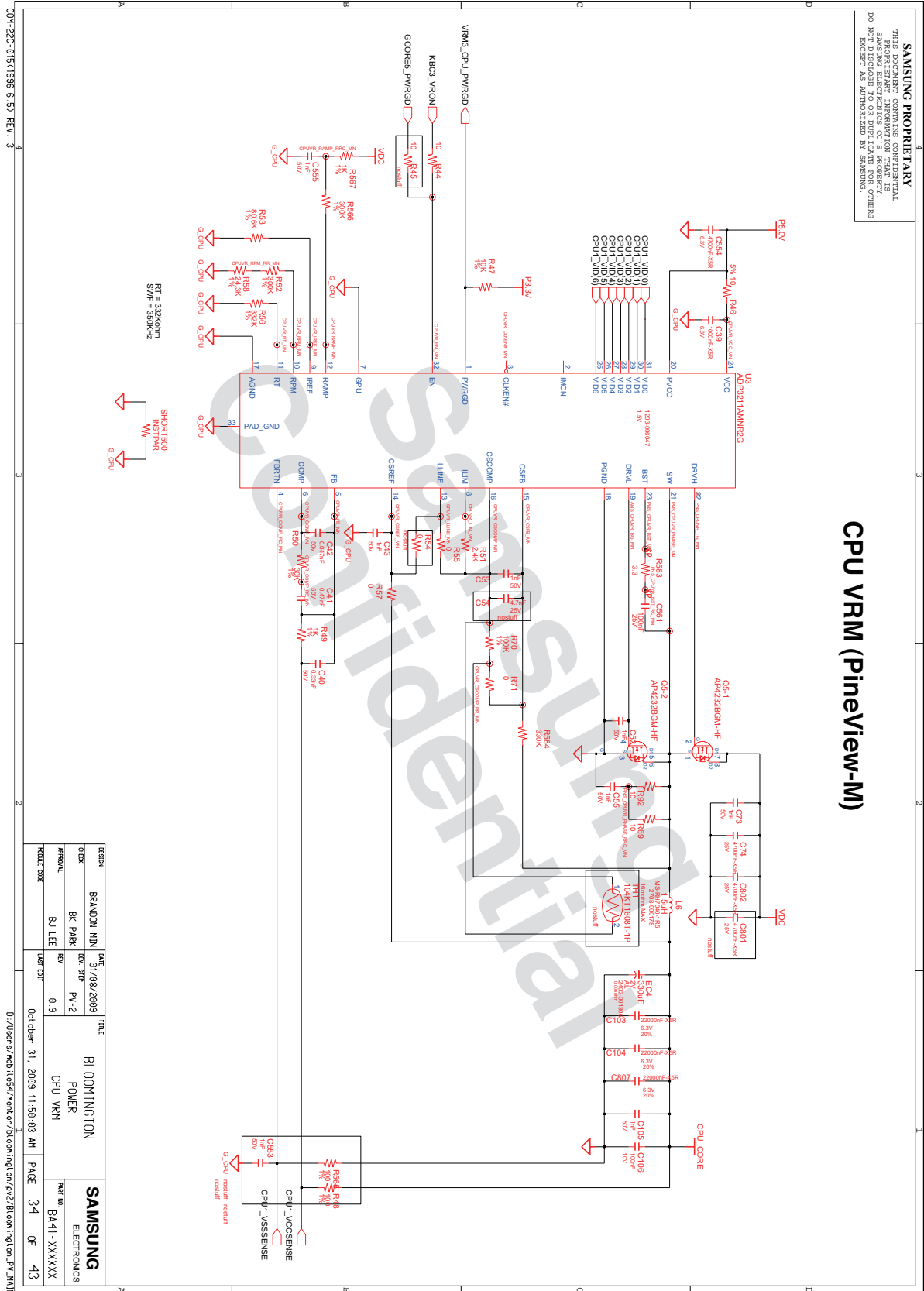


- 이 문서는 삼성전자의 기술 자산으로 승인자만이 사용할 수 있습니다 -
- This Document can not be used without Samsung's authorization -

8. Block Diagram and Schematic



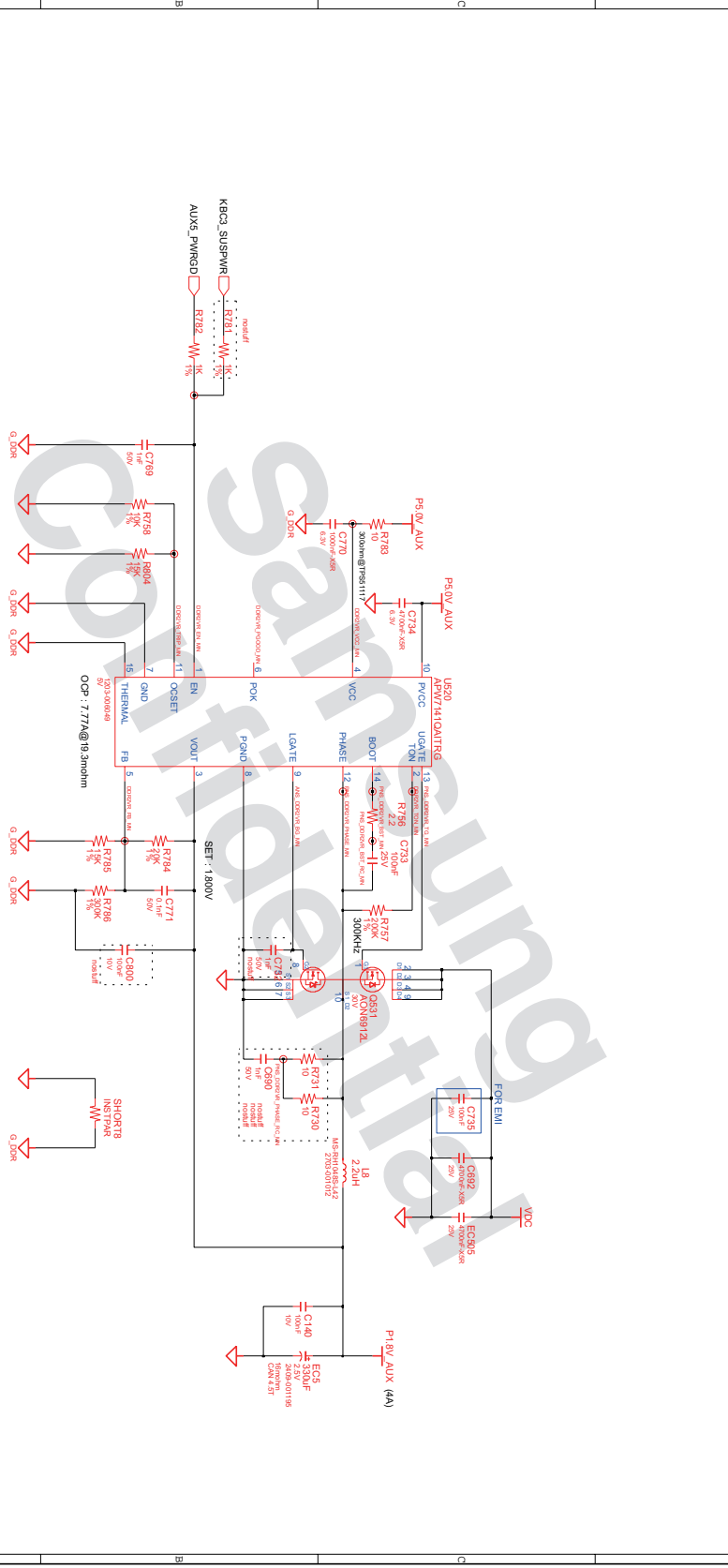
8. Block Diagram and Schematic



8. Block Diagram and Schematic

SAMSUNG PROPRIETARY
 THIS DOCUMENT CONTAINS CONFIDENTIAL
 SAMSUNG INFORMATION THAT IS
 PROPRIETARY INFORMATION THAT IS
 NOT TO BE DISCLOSED TO OR USED BY OTHERS
 EXCEPT AS AUTHORIZED BY SAMSUNG.

DDR2 Power (P1.8V_AUX)

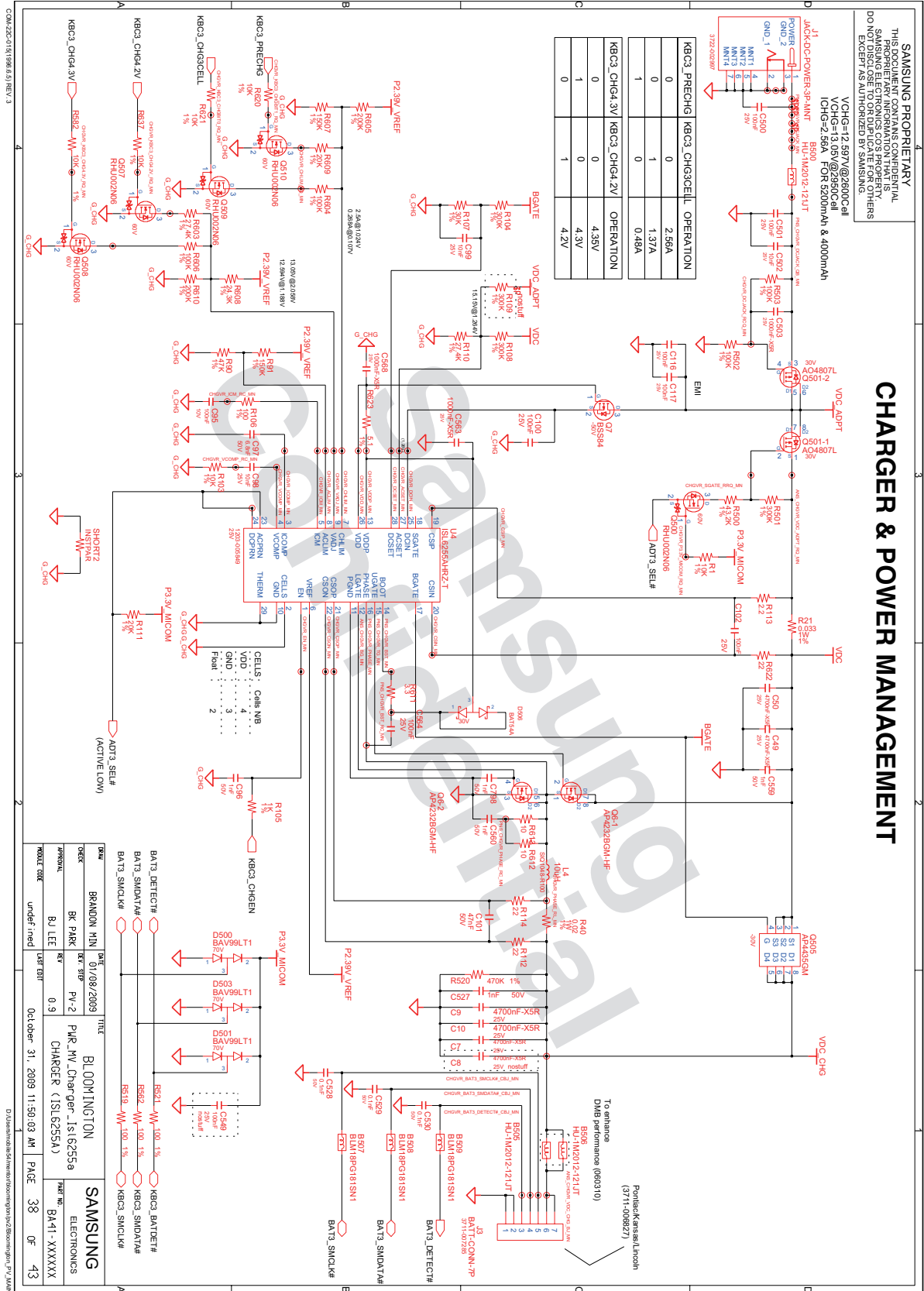


DESIGNER	BRANDON MIN	DATE	01/08/2009	TITLE	BLOOMINGTON	SAMSUNG
DESIGN	BK PARK	REV	PV-2		PKR_Memoru	ELECTRONICS
APPROVAL	BJ LEE	REV	0-9		P1.8V_AUX	
MODEL CODE	undef need	LAST EDIT	October 31, 2009 11:50:03 AM			
					PAGE 36	OF 43

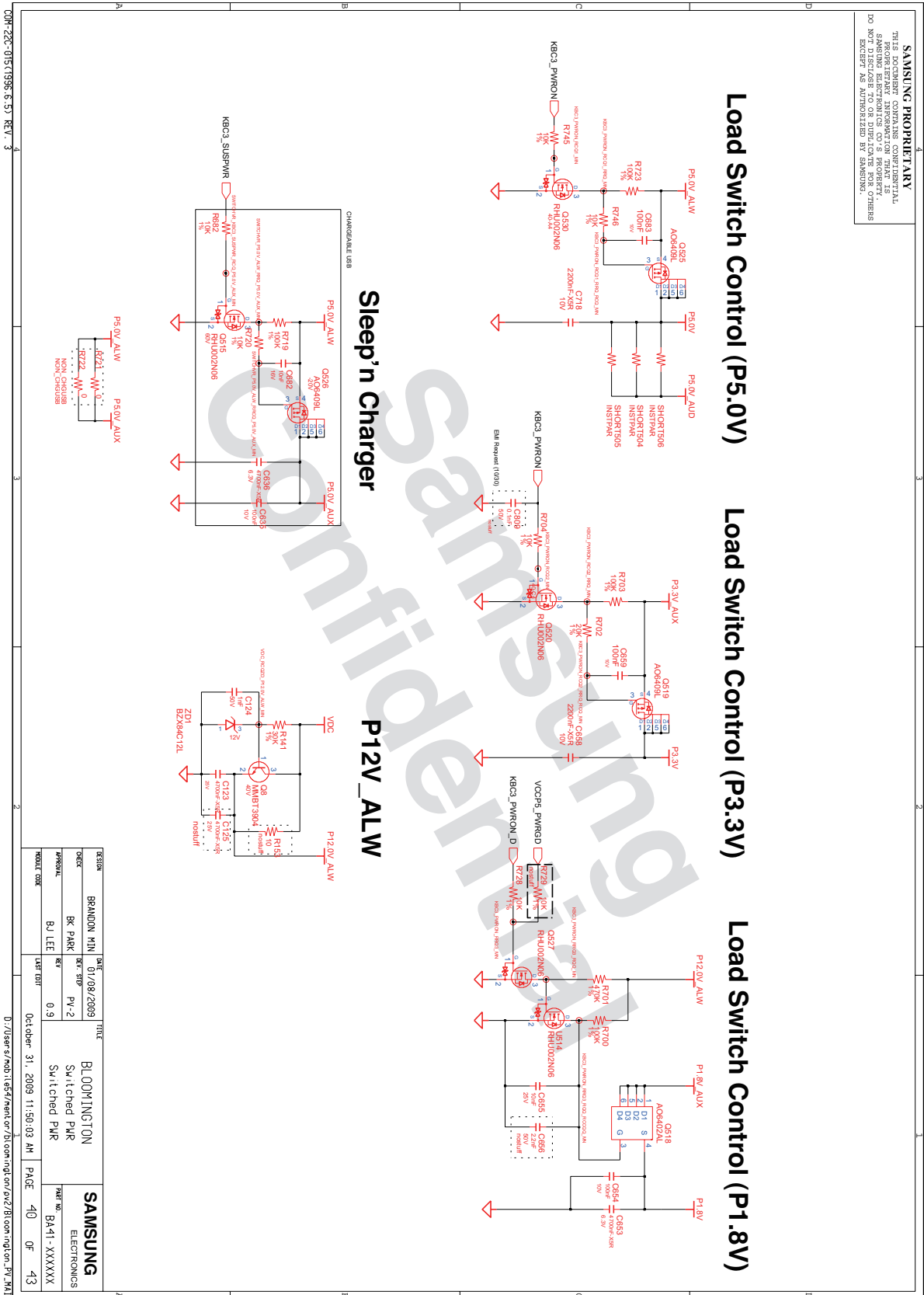
0:\Users\moo11657\new\or\bl\com\ng\or\pv2\bl\com\ng\on\pv MAIN

- 이 문서는 삼성전자의 기술 자산으로 승인자만이 사용할 수 있습니다 -
 - This Document can not be used without Samsung's authorization -

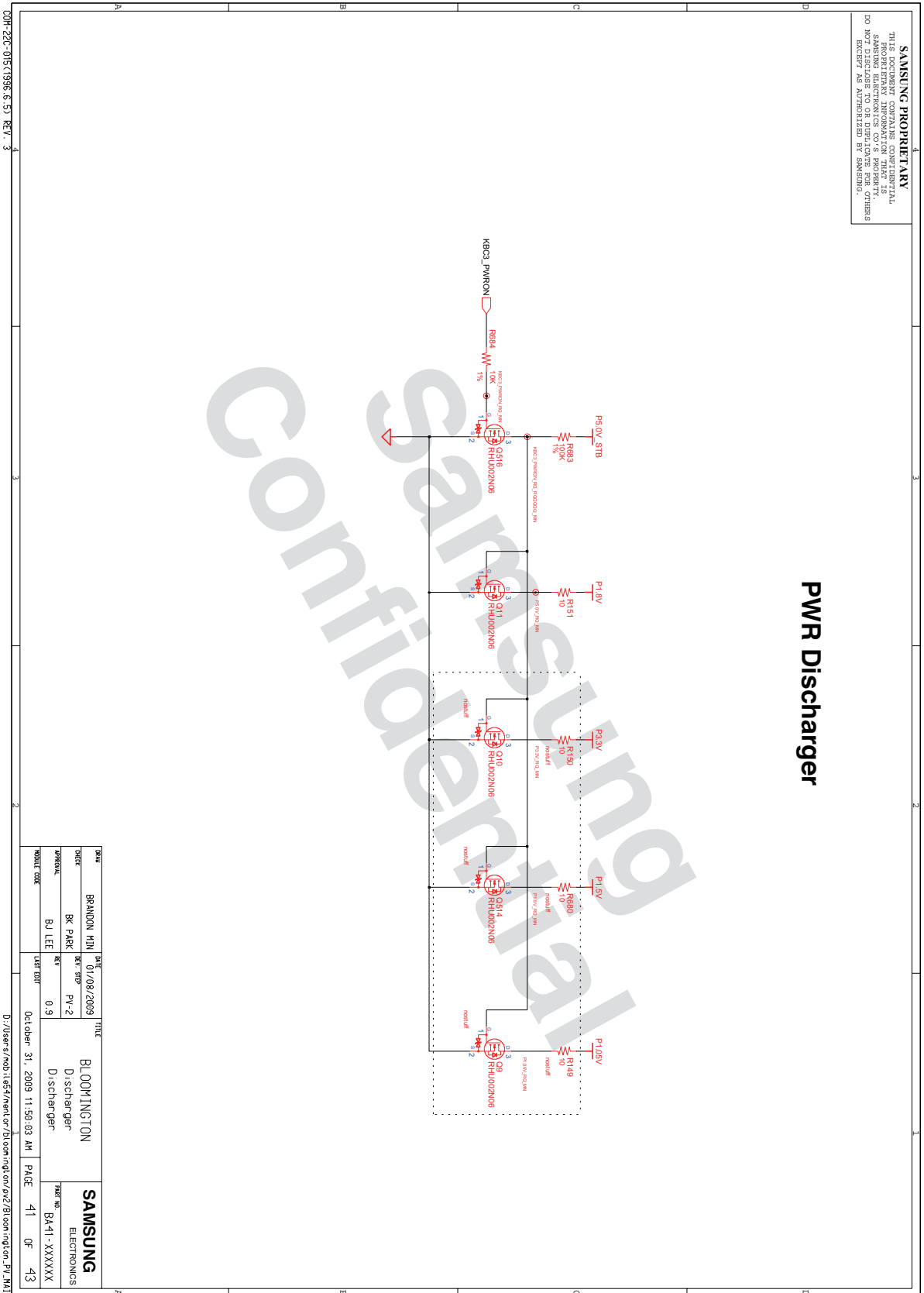
8. Block Diagram and Schematic



8. Block Diagram and Schematic



8. Block Diagram and Schematic



- 이 문서는 삼성전자의 기술 자산으로 승인자만이 사용할 수 있습니다 -
- This Document can not be used without Samsung's authorization -

8. Block Diagram and Schematic

SAMSUNG PROPRIETARY

THIS DOCUMENT CONTAINS CONFIDENTIAL AND PROPRIETARY INFORMATION THAT IS NOT TO BE RELEASED TO OR USED BY OTHERS EXCEPT AS AUTHORIZED BY SAMSUNG.

DESIGN	BRANDON MIN	DATE	3/2/2009	TITLE	BLOOMINGTON	SAMSUNG
DESIGN	BK PARK	REV	PV-2	IP	ELECTRONICS	
APPROVAL	BJ LEE	REV	0.9	TTP FREE		PROJ NO. BA-41-XXXXXX
MODEL CODE		LAST EDIT		Oct 08 11:50:03 AM	PAGE	42 OF 43

D:\Users\moo11857\ndoc\Bloomington\pv_41\1

- 이 문서는 삼성전자의 기술 자산으로 승인자만이 사용할 수 있습니다 -
- This Document can not be used without Samsung's authorization -

8. Block Diagram and Schematic
